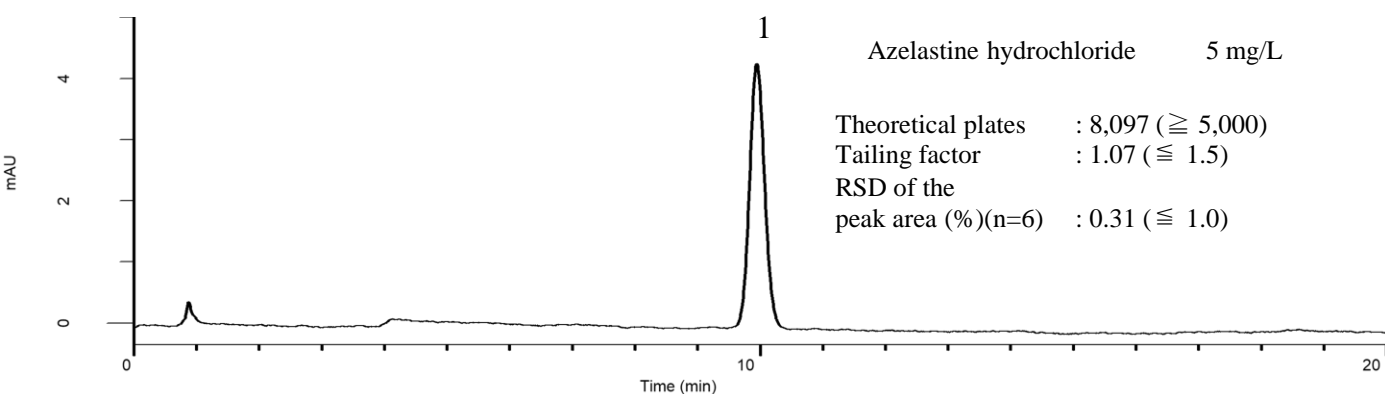
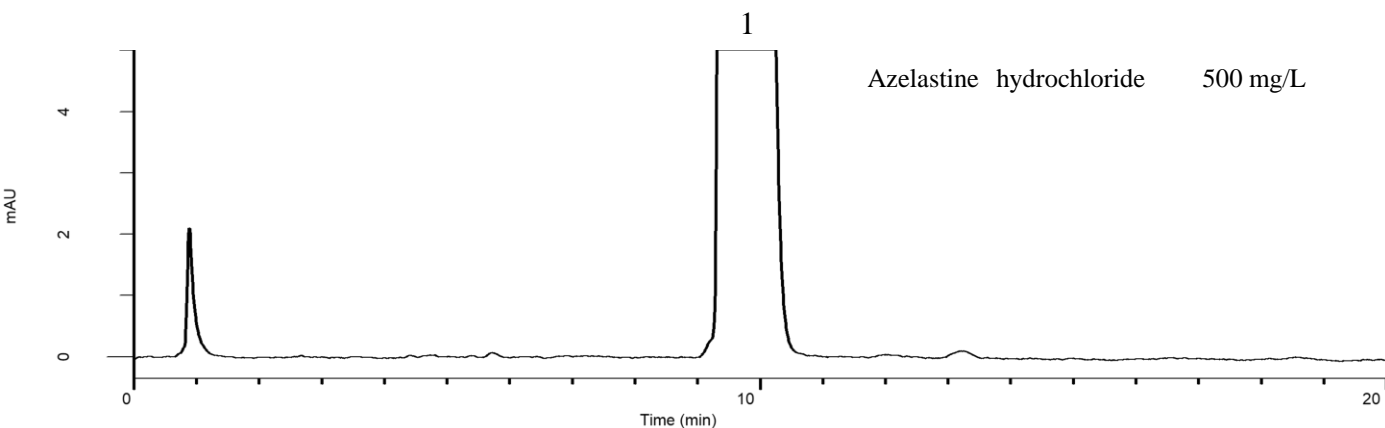


Analysis of Azelastine hydrochloride

(Under the Condition of the Japanese Pharmacopoeia)



Conditions

System : GL-7400 HPLC system
Column : InertSustain C18
 (5 μ m, 150 x 4.6 mm I.D.)
Column Cat. No. : 5020-07345
Eluent : A) CH₃CN
 B) H₂O
 C) HClO₄
 A/B/C = 340/660/1, v/v/v
Flow Rate : 1.75 mL/min
Col. Temp. : 35 °C
Detection : UV 240 nm (GL-7452 PDA Detector)
Injection Vol. : 20 μ L
Sample : Standard

Analyte:

1. Azelastine hydrochloride