

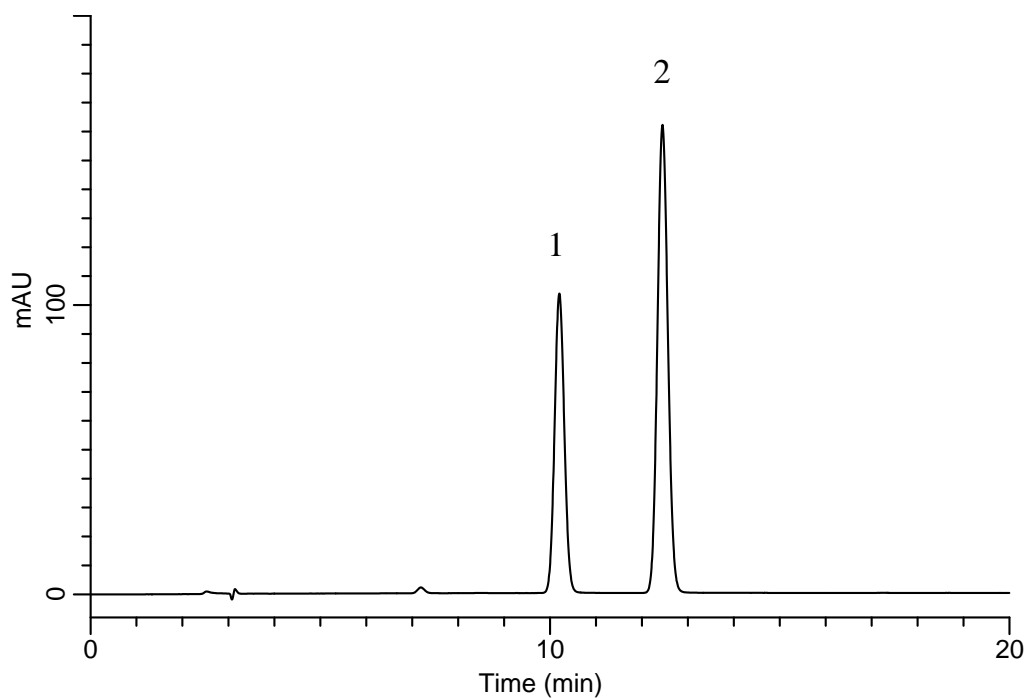
InertSearch™ for LC

Inertsil® Applications

Analysis of Hydrochlorothiazide

(Under the Condition of the Japanese Pharmacopoeia)

Data No. LB178-0919



Conditions

System : GL-7400 HPLC system
Column : Inertsil WP300 C18
(5 μ m, 250 x 4.6 mm I.D.)
Column Cat. No. : 5020-05846
Eluent : A) CH₃CN
B) Buffer*
A/B = 1/9, v/v
Flow Rate : 1.15 mL/min
Col. Temp. : 25 °C
Detection : UV 254 nm (GL-7452 PDA Detector)
Injection Vol. : 20 μ L
Sample : Standard

Analyte:

1. Hydrochlorothiazide 150 mg/L
2. 4-Aminoacetophenone 225 mg/L

Resolution (1, 2) : 5.6 (≥ 4)
RSD of the peak
area ratio of
1 to 2 (%) (n=6) : 0.07 (≤ 1.0)

*Dissolve 15.60 g of sodium dihydrogenphosphate dihydrate in 900 mL of water.
Adjust pH 3.0 by phosphoric acid.
Add water to make up to 1000 mL.