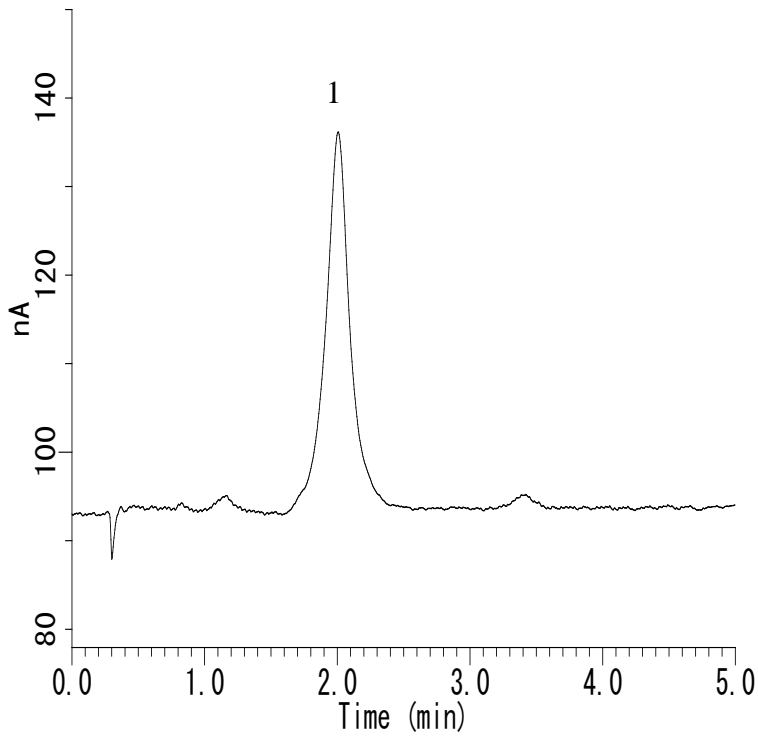


Analysis of Erythromycin



Conditions

System : LC800 System
Column : Inertsil ODS-4 HP
 (3 μ m, 50 x 2.1 mm I.D.)
Column Cat. No. : 5020-14062
Eluent : A) CH₃CN
 B) 10mM KH₂PO₄ in H₂O (pH6.5, 10mM K₂HPO₄ in H₂O)
 A/B =40/60, v/v (gradient mixer)
Flow Rate : 0.3 mL/min
Col. Temp. : 60 °C
Detection : ECD 900 mV vs Ag/AgCl (ED 723 EC Detector, Diamond)
Injection Vol. : 1 μ L
Sample : Standard

Analyte:

1. Erythromycin 10 μ g/mL