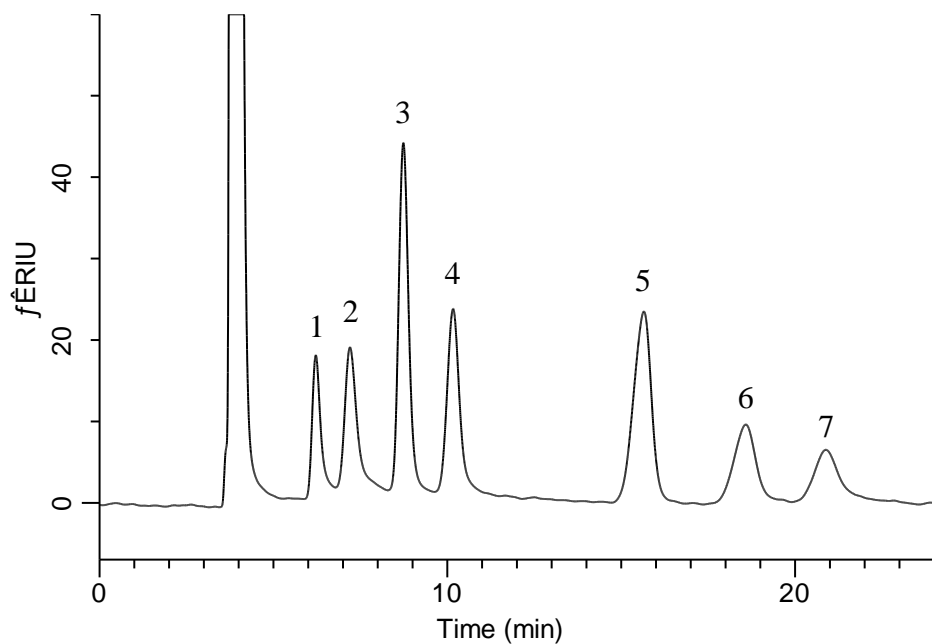


Analysis of Sugars



Conditions

System : GL-7400 HPLC system
Column : InertSustain NH2
 (5 μ m, 250 x 4.6 mm I.D.)
Column Cat. No. : 5020-16628
Eluent : A) CH₃CN
 B) H₂O
 A/B = 85/15, v/v
Flow Rate : 1.0 mL/min
Col. Temp. : 40 °C
Detection : RI
Injection Vol. : 10 μ L
Sample : Standard

Analyte:

1. Rhamnose	10 mg/mL
2. Fucose	10 mg/mL
3. Fructose	10 mg/mL
4. Glucose	10 mg/mL
5. Sucrose	10 mg/mL
6. Maltose	10 mg/mL
7. Lactose	10 mg/mL