

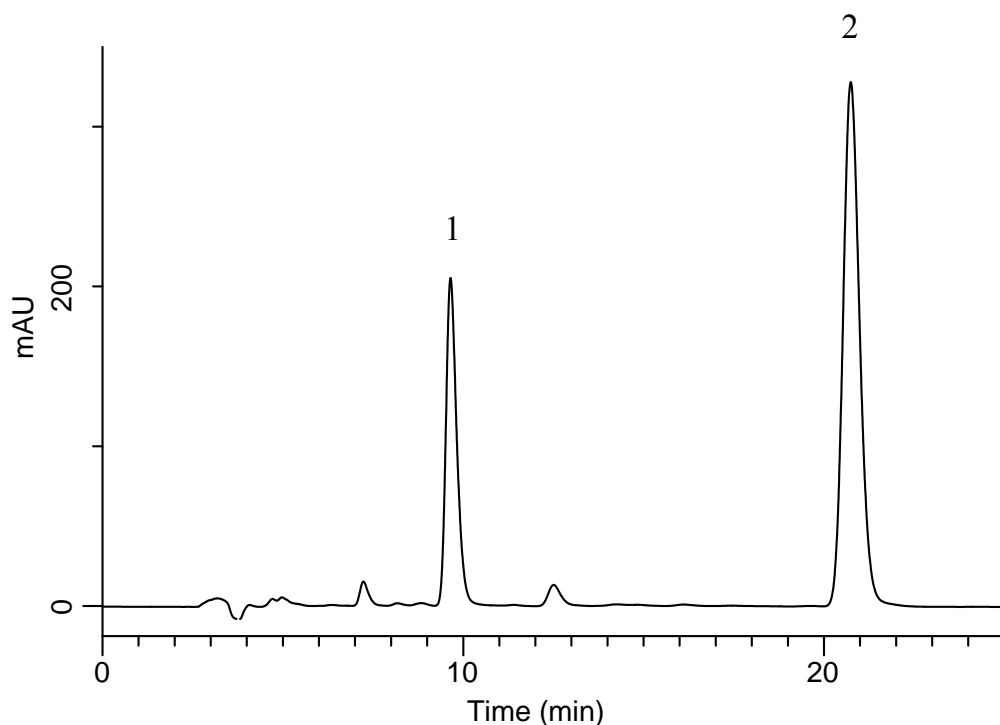
InertSearch™ for LC

Inertsil® Applications

Analysis of Glycyrrhiza

(Under the Condition of the Japanese Pharmacopoeia)

Data No. LB181-0894



Conditions

System : GL-7400 HPLC system
Column : InertSustain C18
(5 μ m, 150 x 4.6 mm I.D.)
Column Cat. No. : 5020-07345
Eluent : A) CH₃CN
B) 2.1% CH₃COOH in H₂O
A/B = 40/60, v/v
Flow Rate : 0.45 mL/min
Col. Temp. : 20 °C
Detection : UV 254 nm (GL-7452 PDA Detector)
Injection Vol. : 20 μ L
Sample : Standard

Analyte:

1. Glycyrrhizic acid 250 mg/L
2. *p*-Hydroxybenzoic acid *n*-propyl ester 50 mg/L

Resolution (1, 2) : 11.18 (\geq 1.5)