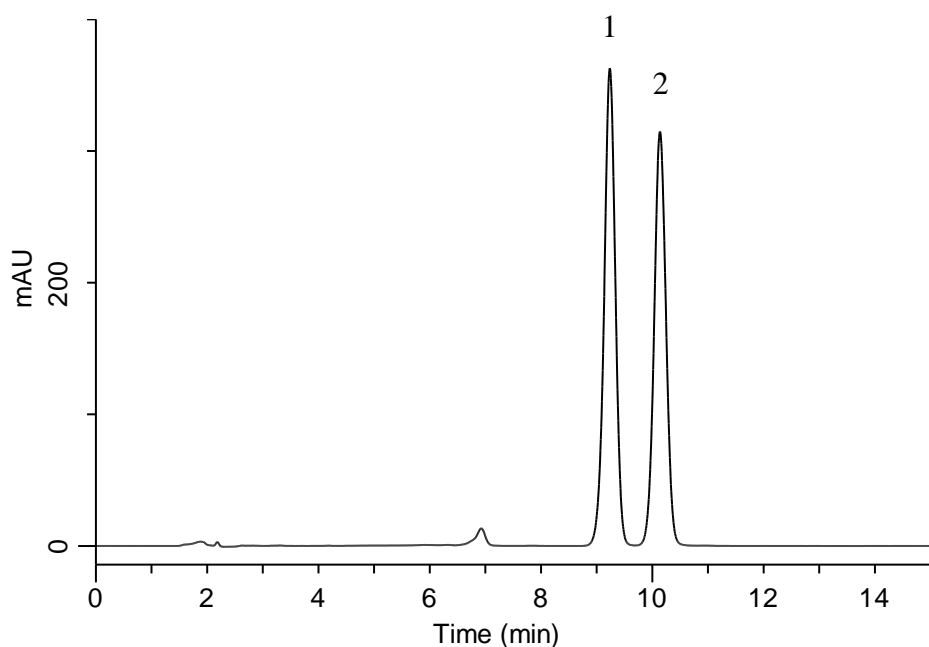


## Analysis of Phellodendron Bark

(Under the Condition of the Japanese Pharmacopoeia)



### Conditions

**System** : GL-7400 HPLC system  
**Column** : InertSustain C18  
 (5  $\mu$  m, 150 x 4.6 mm I.D.)  
**Column Cat. No.** : 5020-07345  
**Eluent** : 3.4 g/L  $\text{KH}_2\text{PO}_4$  + 1.7 g/L IPCC-12A  
 in ( $\text{CH}_3\text{CN}/\text{H}_2\text{O} = 1/1$ , v/v)  
 (IPCC-12A: Sodium 1-Dodecylsulfate)  
**Flow Rate** : 1.15 mL/min  
**Col. Temp.** : 40 °C  
**Detection** : UV 345 nm (GL-7452 PDA Detector)  
**Injection Vol.** : 20  $\mu$ L  
**Sample** : Standard

### Analyte:

1. Palmatine chloride 100 mg/L  
 2. Berberine hydrochloride 100 mg/L

Resolution (1, 2) : 2.41 ( $\geq 1.5$ )