

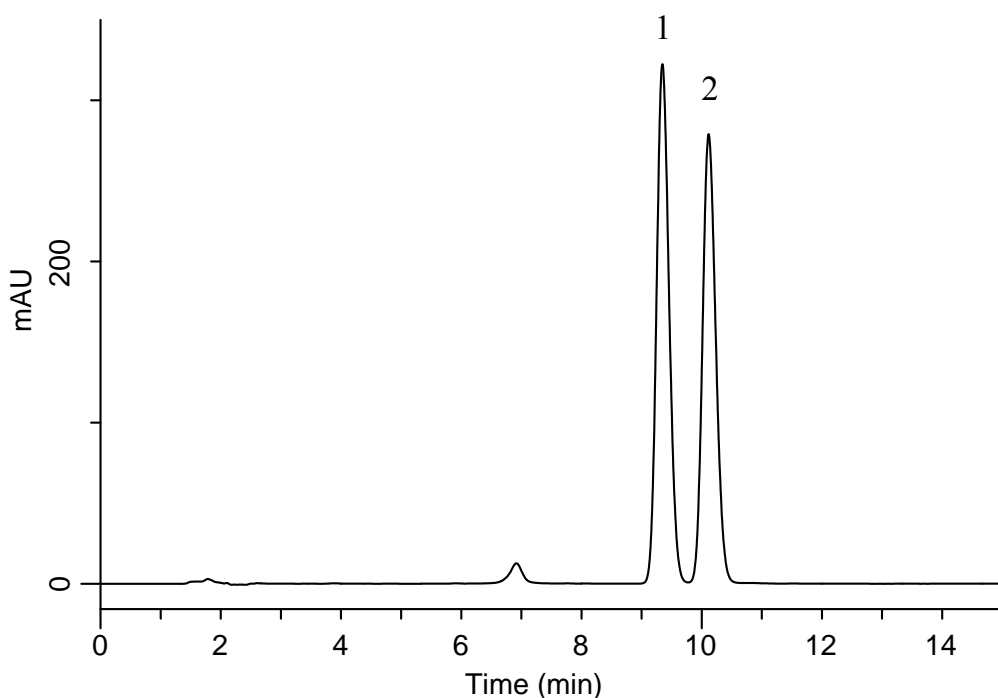
InertSearch™ for LC

Inertsil® Applications

Analysis of Phellodendron Bark

(Under the Condition of the Japanese Pharmacopoeia)

Data No. LB184-0919



Conditions

System : GL-7400 HPLC system
Column : Inertsil ODS-3
(5 μ m, 150 x 4.6 mm I.D.)
Column Cat. No. : 5020-01731
Eluent : 3.4 g/L KH_2PO_4 + 1.7 g/L IPCC-12A
in ($\text{CH}_3\text{CN}/\text{H}_2\text{O} = 1/1$, v/v)
(IPCC-12A: Sodium 1-Dodecylsulfate)
Flow Rate : 1.25 mL/min
Col. Temp. : 40 $^\circ\text{C}$
Detection : UV 345 nm (GL-7452 PDA Detector)
Injection Vol. : 20 μL
Sample : Standard

Analyte:

1. Palmatine chloride 100 mg/L
2. Berberine hydrochloride 100 mg/L

Resolution (1, 2) : 1.95 (≥ 1.5)