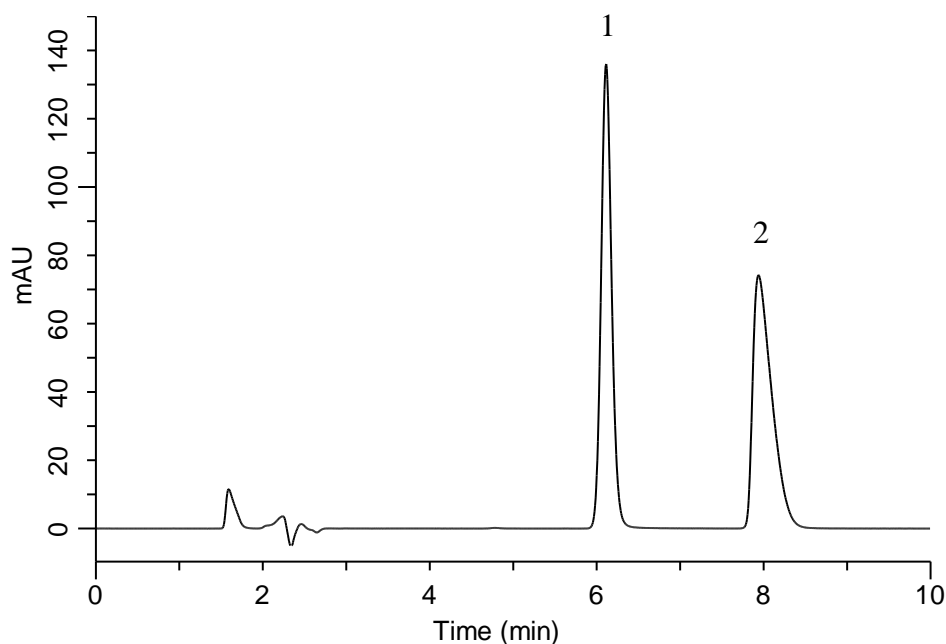


## Analysis of Chlorpheniramine maleate

(Under the Condition of the Japanese Pharmacopoeia,  
Chlorpheniramine maleate Tablets)



### Conditions

**System** : GL-7400 HPLC system  
**Column** : InertSustain C18  
 (5  $\mu$  m, 150 x 4.6 mm I.D.)  
**Column Cat. No.** : 5020-07345  
**Eluent** : A) CH<sub>3</sub>CN  
 B) 1 g/L IPCC-07 in (1.0% CH<sub>3</sub>COOH in H<sub>2</sub>O)  
 (IPCC-07: Sodium 1-Heptanesulfonate)  
 A/B = 35/65, v/v  
**Flow Rate** : 0.75 mL/min  
**Col. Temp.** : 40 °C  
**Detection** : UV 265 nm (GL-7452 PDA Detector)  
**Injection Vol.** : 30  $\mu$ L  
**Sample** : Standard

### Analyte:

1. *p*-Hydroxybenzoic acid methyl ester 7 mg/L  
 2. Chlorpheniramine 40 mg/L

Resolution (1, 2) : 5.65 ( $\geq$  2.0)  
 RSD of the peak  
 area ratio of  
 2 to 1 (%) (n=6) : 0.19 ( $\leq$  1.0)