

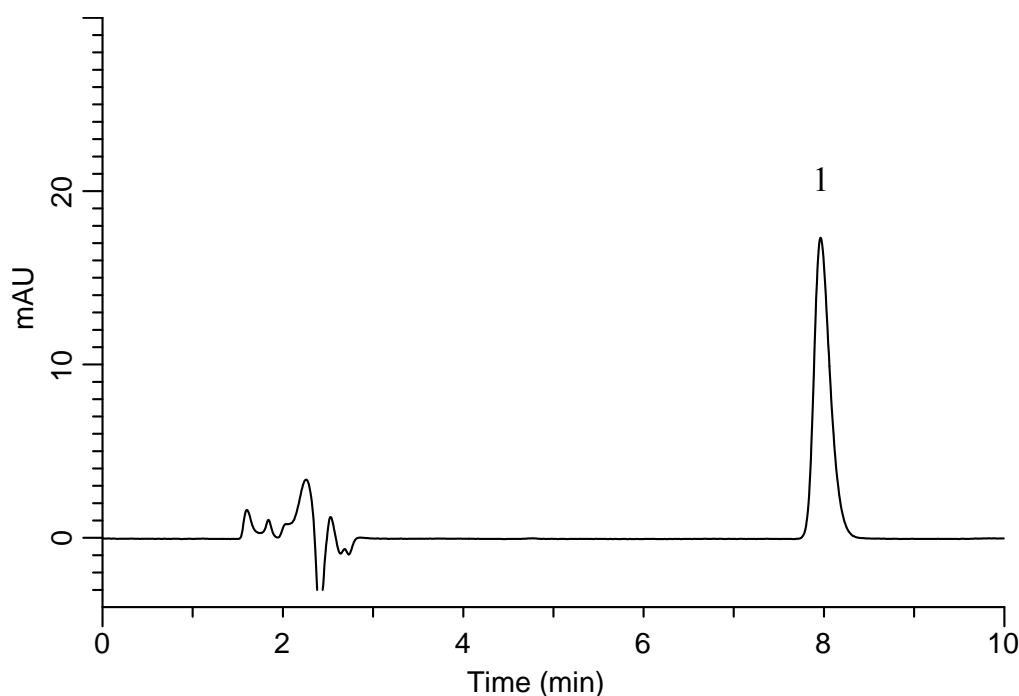
InertSearch™ for LC

Inertsil® Applications

Analysis of Chlorpheniramine maleate

(Under the Condition of the Japanese Pharmacopoeia,
Chlorpheniramine maleate Tablets)

Data No. LB186-0919



Conditions

System : GL-7400 HPLC system
Column : InertSustain C18
(5 μ m, 150 x 4.6 mm I.D.)
Column Cat. No. : 5020-07345
Eluent : A) CH₃CN
B) 1 g/L IPCC-07 in (1.0% CH₃COOH in H₂O)
(IPCC-07: Sodium 1-Heptanesulfonate)
A/B = 35/65, v/v
Flow Rate : 0.75 mL/min
Col. Temp. : 40 °C
Detection : UV 265 nm (GL-7452 PDA Detector)
Injection Vol. : 50 μ L
Sample : Standard

Analyte:

1. Chlorpheniramine 4.4 mg/L

Theoretical plates : 9,462 (\geq 2,000)
Tailing factor : 1.37 (\leq 2.5)
RSD of the
peak area (n=6) : 0.27 (\leq 2.0)