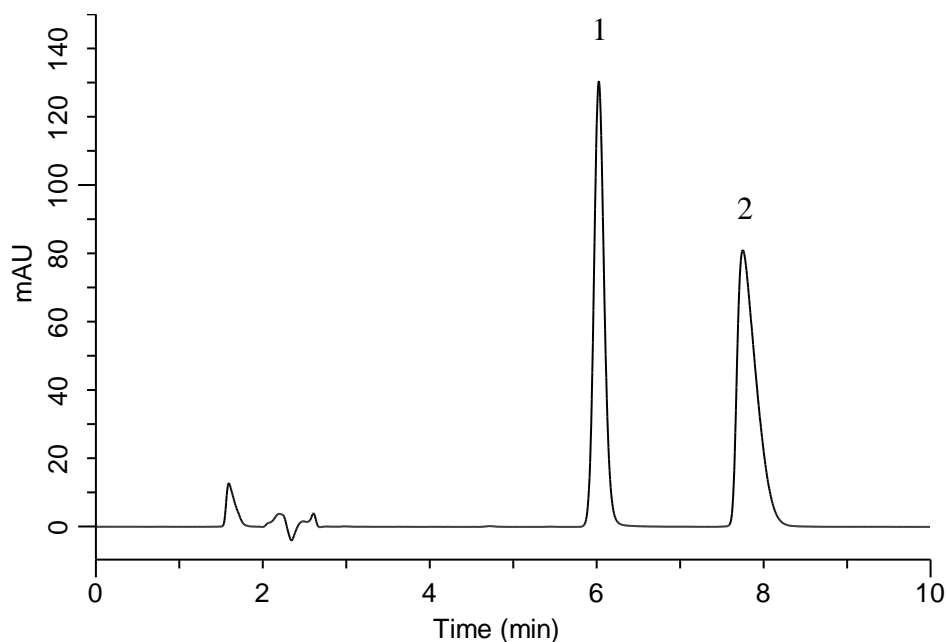


Analysis of Chlorpheniramine maleate

(Under the Condition of the Japanese Pharmacopoeia,
Chlorpheniramine maleate Tablets)



Conditions

System : GL-7400 HPLC system
Column : InertSustain C18
 (5 μ m, 150 x 4.6 mm I.D.)
Column Cat. No. : 5020-07345
Eluent : A) CH₃CN
 B) 1 g/L IPCC-07 in (1.0% CH₃COOH in H₂O)
 (IPCC-07: Sodium 1-Heptanesulfonate)
 A/B = 35/65, v/v
Flow Rate : 0.75 mL/min
Col. Temp. : 40 °C
Detection : UV 265 nm (GL-7452 PDA Detector)
Injection Vol. : 30 μ L
Sample : Standard

Analyte:

1. *p*-Hydroxybenzoic acid methyl ester 7 mg/L
 2. Chlorpheniramine 40 mg/L

Resolution (1, 2) : 5.35 (\geq 2.0)
 RSD of the peak
 area ratio of
 2 to 1 (%) (n=6) : 0.29 (\leq 1.0)