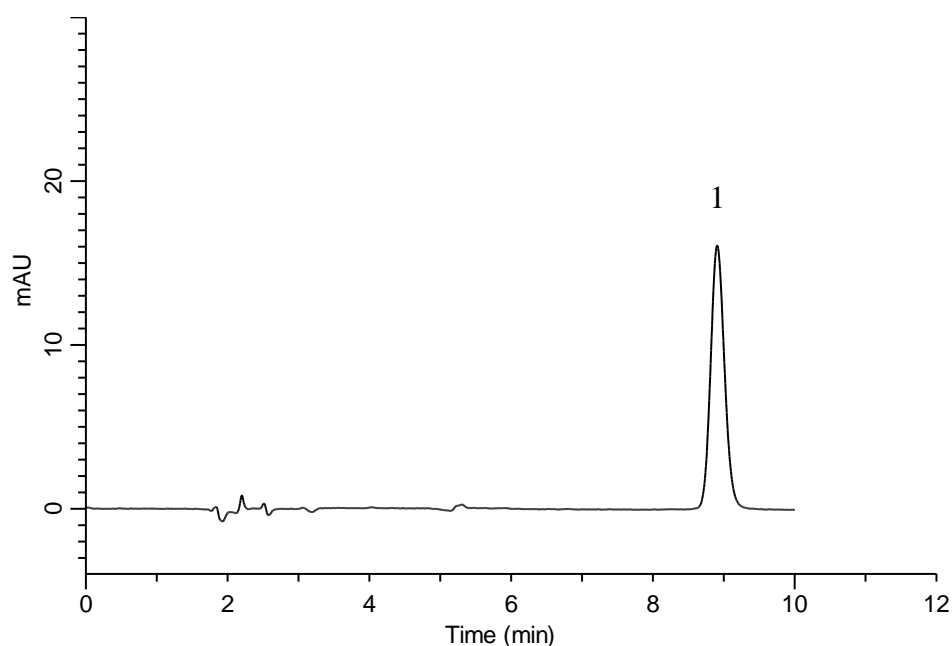


Analysis of Pioglitazone hydrochloride

(Under the Condition of the Japanese Pharmacopoeia,
Pioglitazone hydrochloride and Metformin hydrochloride Tablets)



Conditions

System : GL-7400 HPLC system

Column : Inertsil C8-3
(5 μ m, 150 x 6.0 mm I.D.)

Column Cat. No. : 5020-04955

Eluent : 7.2 g/L Sodium lauryl sulfate in (5.75 g/L $\text{NH}_4\text{H}_2\text{PO}_4$ in $\text{H}_2\text{O}/\text{CH}_3\text{CN} = 1/1$, v/v)

Flow Rate : 1.15 mL/min

Col. Temp. : 25 $^\circ\text{C}$

Detection : UV 225 nm (GL-7452 PDA Detector)

Injection Vol. : 5 μ L

Sample : Standard

Analyte:

1. Pioglitazone

18.5 mg/L

Theoretical plates : 10,171 ($\geq 8,000$)

Tailing factor : 1.12 (≤ 2.0)

RSD of the
peak area (%) (n=6) : 0.13 (≤ 1.0)