

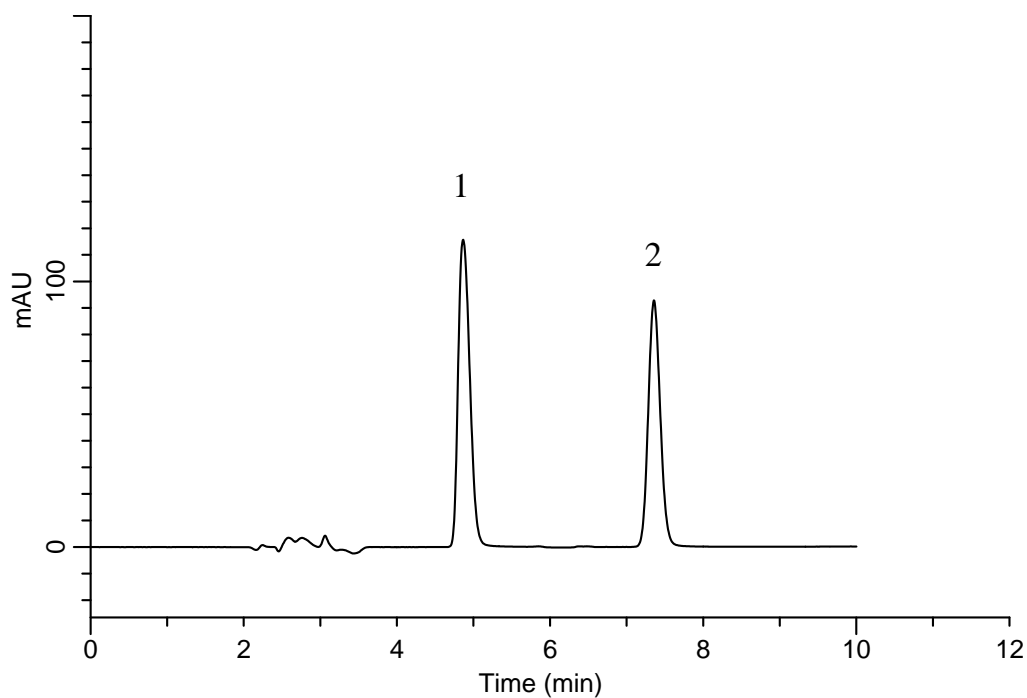
InertSearch™ for LC

Inertsil® Applications

Analysis of Metformin hydrochloride

(Under the Condition of the Japanese Pharmacopoeia,
Pioglitazone hydrochloride and Metformin hydrochloride Tablets)

Data No. LB194-0894



Conditions

System	: GL-7400 HPLC system
Column	: Inertsil C8-3 (5 μ m, 150 x 6.0 mm I.D.)
Column Cat. No.	: 5020-04955
Eluent	: 7.2 g/L Sodium lauryl sulfate in (5.75 g/L $\text{NH}_4\text{H}_2\text{PO}_4$ in $\text{H}_2\text{O}/\text{CH}_3\text{CN} = 1/1$, v/v)
Flow Rate	: 0.95 mL/min
Col. Temp.	: 25 °C
Detection	: UV 255 nm (GL-7452 PDA Detector)
Injection Vol.	: 10 μ L
Sample	: Standard

Analyte:

1. Metformin	250 mg/L
2. <i>p</i> -Methoxyacetophenone	25 mg/L

Resolution (1, 2)	: 8.74 (≥ 2.5)
RSD of the peak area ratio of 1 to 2 (%) (n=6)	: 0.46 (≤ 1.0)