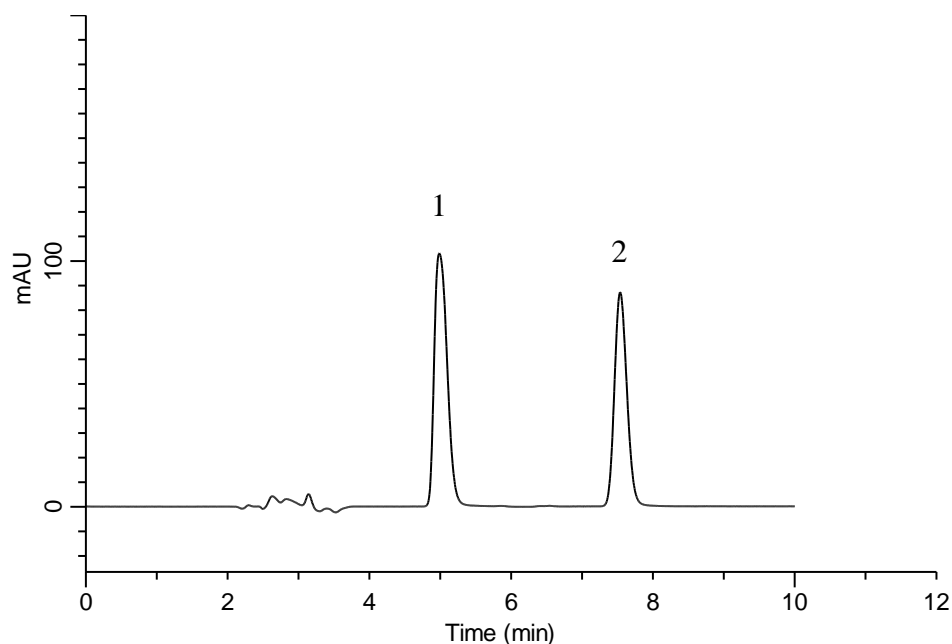


Analysis of Metformin hydrochloride

(Under the Condition of the Japanese Pharmacopoeia,
Pioglitazone hydrochloride and Metformin hydrochloride Tablets)



Conditions

System : GL-7400 HPLC system
Column : InertSustain C8
 (5 μ m, 150 x 6.0 mm I.D.)
Column Cat. No. : 5020-16057
Eluent : 7.2 g/L Sodium lauryl sulfate in (5.75 g/L $\text{NH}_4\text{H}_2\text{PO}_4$ in $\text{H}_2\text{O}/\text{CH}_3\text{CN} = 1/1$, v/v)
Flow Rate : 0.9 mL/min
Col. Temp. : 25 °C
Detection : UV 255 nm (GL-7452 PDA Detector)
Injection Vol. : 10 μ L
Sample : Standard

Analyte:

1. Metformin 250 mg/L
 2. *p*-Methoxyacetophenone 25 mg/L

Resolution (1, 2) : 7.70 (≥ 2.5)
 RSD of the peak
 area ratio of
 1 to 2 (%) (n=6) : 0.22 (≤ 1.0)