

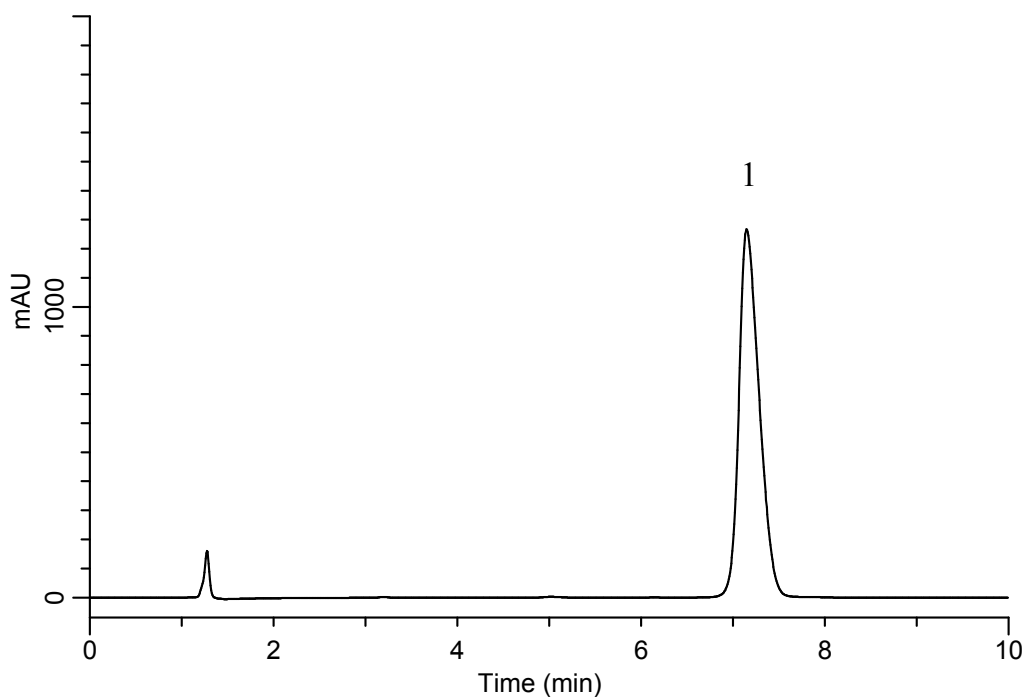
InertSearch™ for LC

Inertsil® Applications

Analysis of Ciprofloxacin hydrochloride

(Under the Condition of the Japanese Pharmacopoeia,
Ciprofloxacin hydrochloride hydrate)

Data No. LB196-0894



Conditions

System : GL-7400 HPLC system
Column : InertSustain C18
(5 μ m, 250 x 4.0 mm I.D.)
Column Cat. No. : 5020-07336
Eluent : A) CH₃CN
B) Buffer*
A/B = 13/87, v/v
Flow Rate : 1.45 mL/min
Col. Temp. : 40 °C
Detection : UV 278 nm (GL-7452 PDA Detector)
Injection Vol. : 10 μ L
Sample : Standard

*Dissolve 2.88 g of phosphoric acid in 1000 mL of water.
Adjust pH 3.0 by triethylamine.

Analyte:

1. Ciprofloxacin hydrochloride hydrate 450 mg/L

Theoretical plates : 5,062 (\geq 3,500)

Tailing factor : 1.33 (\leq 1.5)