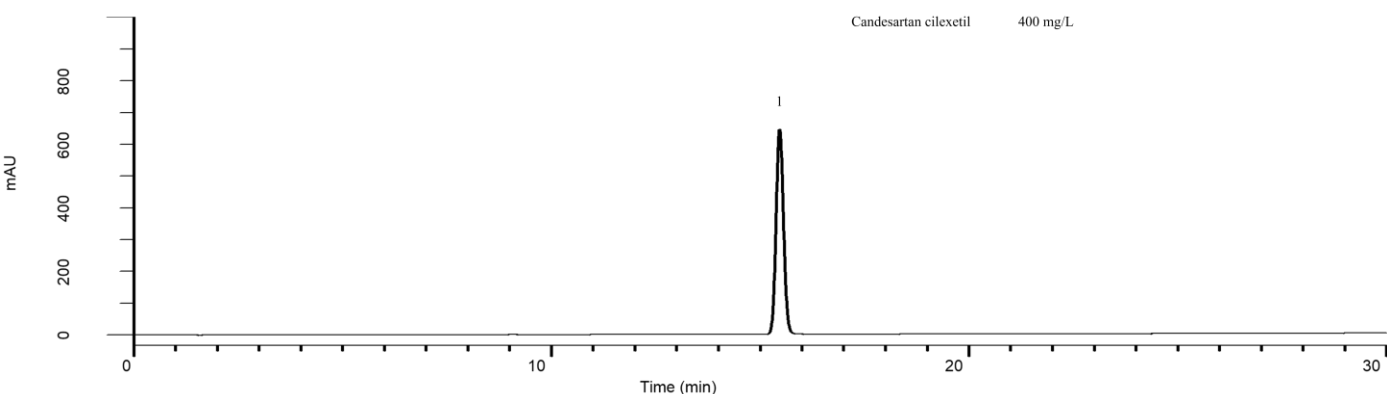
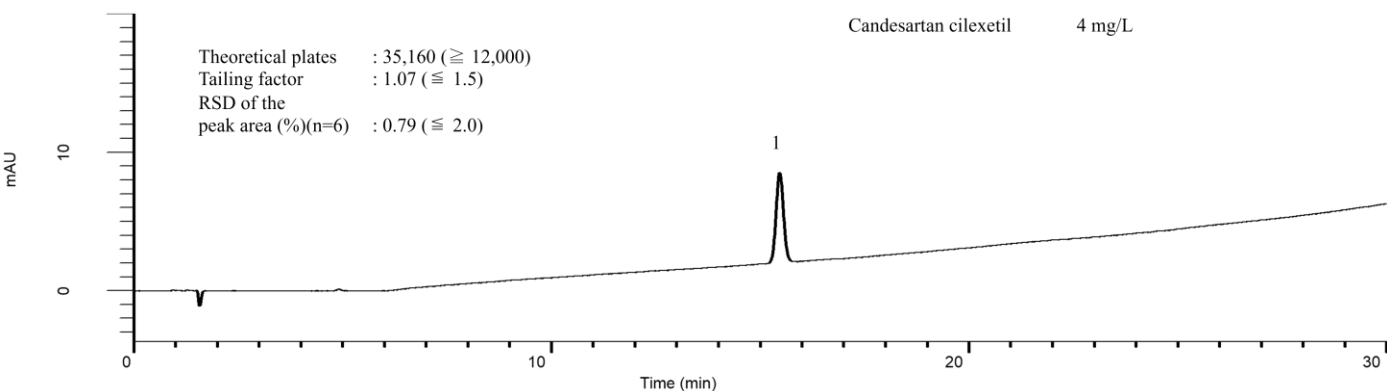


Analysis of Candesartan cilexetil

(Under the Condition of the Japanese Pharmacopoeia)



Conditions

System : GL-7400 HPLC system

Column : Inertsil ODS-3
(4 μ m, 150 x 4.0 mm I.D.)

Column Cat. No. : 5020-04635

Eluent : A) CH₃CN/H₂O/CH₃COOH = 57/43/1, v/v/v
 B) CH₃CN/H₂O/CH₃COOH = 90/10/1, v/v/v
 A/B = 100/0 - 30 min - 0/100, v/v

Flow Rate : 0.8 mL/min

Col. Temp. : 25 °C

Detection : UV 254 nm (GL-7452 PDA Detector)

Injection Vol. : 10 μ L

Sample : Standard

Analyte:

1. Candesartan cilexetil