

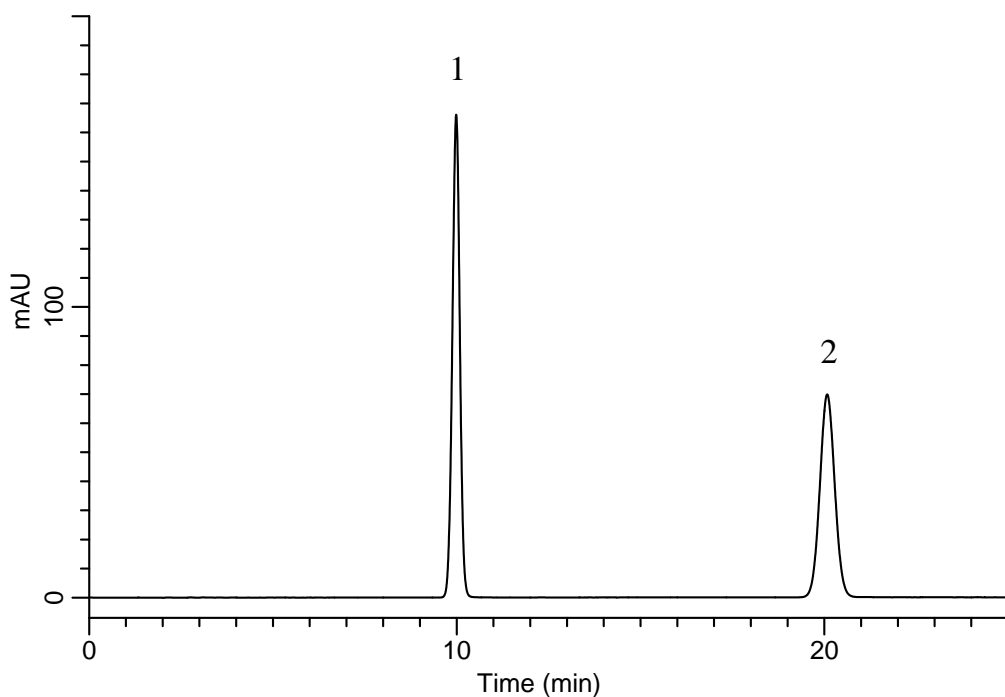
# InertSearch™ for LC

Inertsil® Applications

## Analysis of Metformin hydrochloride

(Under the Condition of the Japanese Pharmacopoeia,  
Metformin hydrochloride Tablets)

Data No. LB204-0894



### Conditions

**System** : GL-7400 HPLC system  
**Column** : InertSustain C18  
(5  $\mu$  m, 150 x 4.6 mm I.D.)  
**Column Cat. No.** : 5020-07345  
**Eluent** : A) CH<sub>3</sub>CN  
B) Solution\*  
A/B = 38/62, v/v  
**Flow Rate** : 0.77 mL/min  
**Col. Temp.** : 40 °C  
**Detection** : UV 235 nm (GL-7452 PDA Detector)  
**Injection Vol.** : 5  $\mu$  L  
**Sample** : Standard

\*Dissolve 1 mL of phosphoric acid in 2500 mL of water.  
Dissolve 0.8 g of sodium lauryl sulfate in 620 mL of this solution.

### Analyte:

1. Metformin hydrochloride 90 mg/L  
2. *p*-Hydroxybenzoic acid iso-butyl ester 180 mg/L

Resolution (1, 2) : 18.1 ( $\geq 6$ )  
RSD of the peak  
area ratio of  
1 to 2 (%) (n=6) : 0.36 ( $\leq 1.0$ )