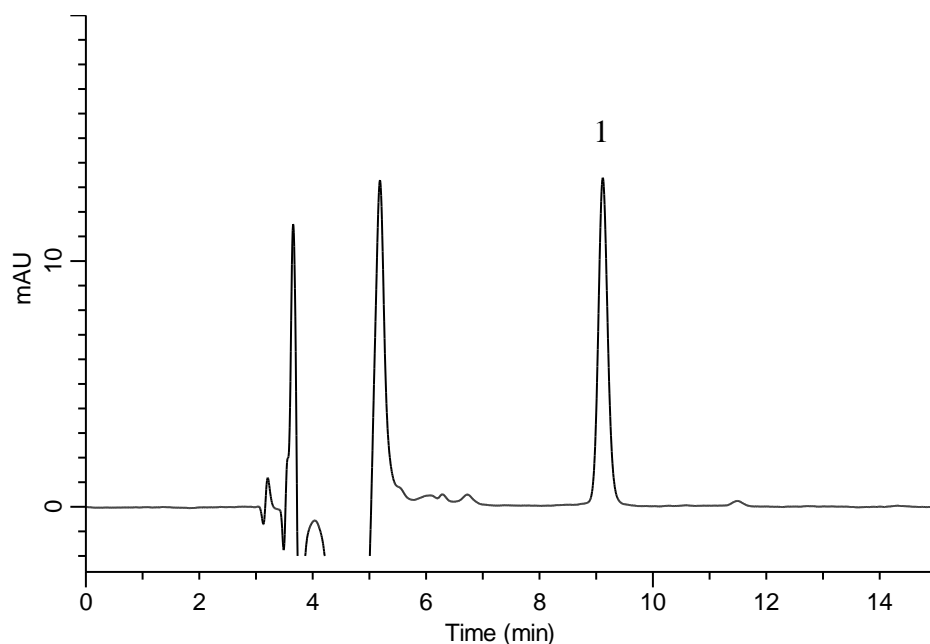


Analysis of Paroxetine hydrochloride

(Under the Condition of the Japanese Pharmacopoeia,
Paroxetine hydrochloride Tablets)



Conditions

System : GL-7400 HPLC system
Column : Inertsil TMS
 (5 μ m, 250 x 4.6 mm I.D.)
Column Cat. No. : 5020-18161
Eluent : A) CH₃CN
 B) Buffer*
 C) Triethylamine
 A/B/C = 40/60/1, v/v/v (pH5.5, CH₃COOH)
Flow Rate : 0.75 mL/min
Col. Temp. : 30 °C
Detection : UV 295 nm (GL-7452 PDA Detector)
Injection Vol. : 25 μ L
Sample : Standard

Analyte:

1. Paroxetine hydrochloride 6.6 mg/L

Theoretical plate number : 14,545 (\geq 5,000)
 Tailing factor : 1.10 (\leq 2.0)
 RSD of the peak area (%) (n=6) : 0.97 (\leq 2.0)

*Dissolve 3.85 g of ammonium acetate in 1000 mL of water.
Adjust pH 4.5 by acetic acid.