

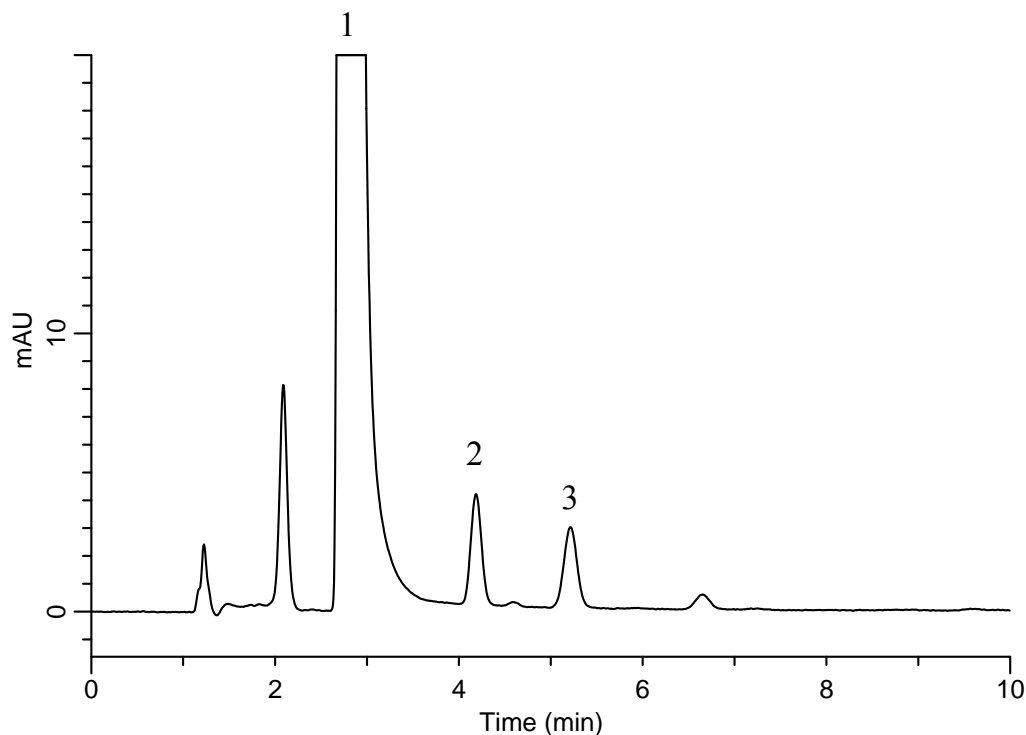
# InertSearch™ for LC

Inertsil® Applications

## Analysis of 2 kinds of Aldehydes

(Directed by Pre-Column Method with DNPH)

Data No. LB212-0894



### Conditions

**System** : GL-7400 HPLC system  
**Column** : Inertsil ODS-4  
(5  $\mu$  m, 150 x 4.6 mm I.D.)  
**Column Cat. No.** : 5020-03945  
**Eluent** : A) CH<sub>3</sub>CN  
B) H<sub>2</sub>O  
A/B = 60/40, v/v  
**Flow Rate** : 1.0 mL/min  
**Col. Temp.** : 40 °C  
**Detection** : UV 360 nm (GL-7452 PDA Detector)  
**Injection Vol.** : 20  $\mu$  L  
**Sample** : Standard

### Analyte:

1. DNPH  
2. DNPH-Formaldehyde 50  $\mu$ g/L  
3. DNPH-Acetaldehyde 50  $\mu$ g/L