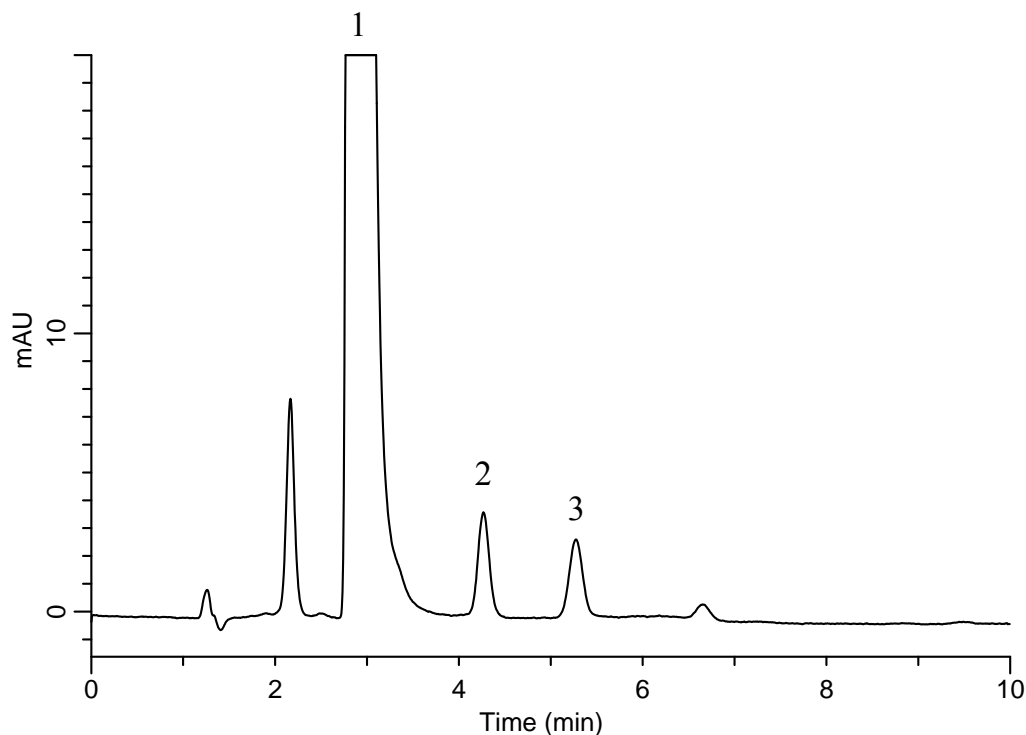


InertSearch™ for LC

Inertsil® Applications

Analysis of 2 kinds of Aldehydes (Directed by Pre-Column Method with DNPH)

Data No. LB216-0894



Conditions

System : GL-7400 HPLC system
Column : Inertsil ODS-SP
(5 μ m, 150 x 4.6 mm I.D.)
Column Cat. No. : 5020-02745
Eluent : A) CH₃CN
B) H₂O
A/B = 60/40, v/v
Flow Rate : 1.0 mL/min
Col. Temp. : 40 °C
Detection : UV 360 nm (GL-7452 PDA Detector)
Injection Vol. : 20 μ L
Sample : Standard

Analyte:

1. DNPH
2. DNPH-Formaldehyde 50 μ g/L
3. DNPH-Acetaldehyde 50 μ g/L