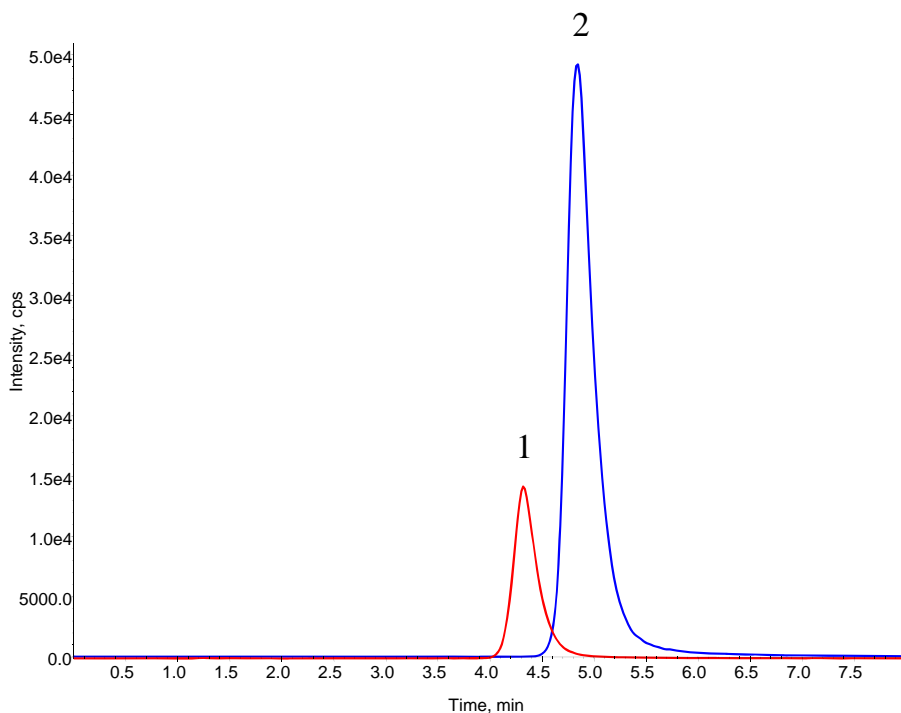


InertSearch™ for LC

Inertsil® Applications

Analysis of Diquat and Paraquat

Data No. LB218-0848



Conditions

System : LC800 HPLC system
4000 QTRAP®
Column : Inertsil WP300 SIL
(3 μm, 100 x 2.1 mm I.D.)
Column Cat. No. : 5020-
Eluent : 0.2 % HCOOH + 150 mM HCOONH₄ in (CH₃CN/H₂O = 60/40, v/v)
Flow Rate : 0.3 mL/min
Col. Temp. : 40 °C
Detection : LC/MS/MS (4000 QTRAP® ESI, Positive, MRM)

Analyte:

1. Diquat dibromide 25 μg/L
2. Paraquat dichloride 25 μg/L

	CUR	CAD	IS	TEM	GS1	GS2		
	10	7	4500	500	80	80		
			Q1	Q3	DP	EP	CE	CXP
Diquat			182.8	156.9	70	10	32	7
Paraquat			92.8	171.2	52	10	21	8

Injection Vol. : 20 μL
Sample : Standard