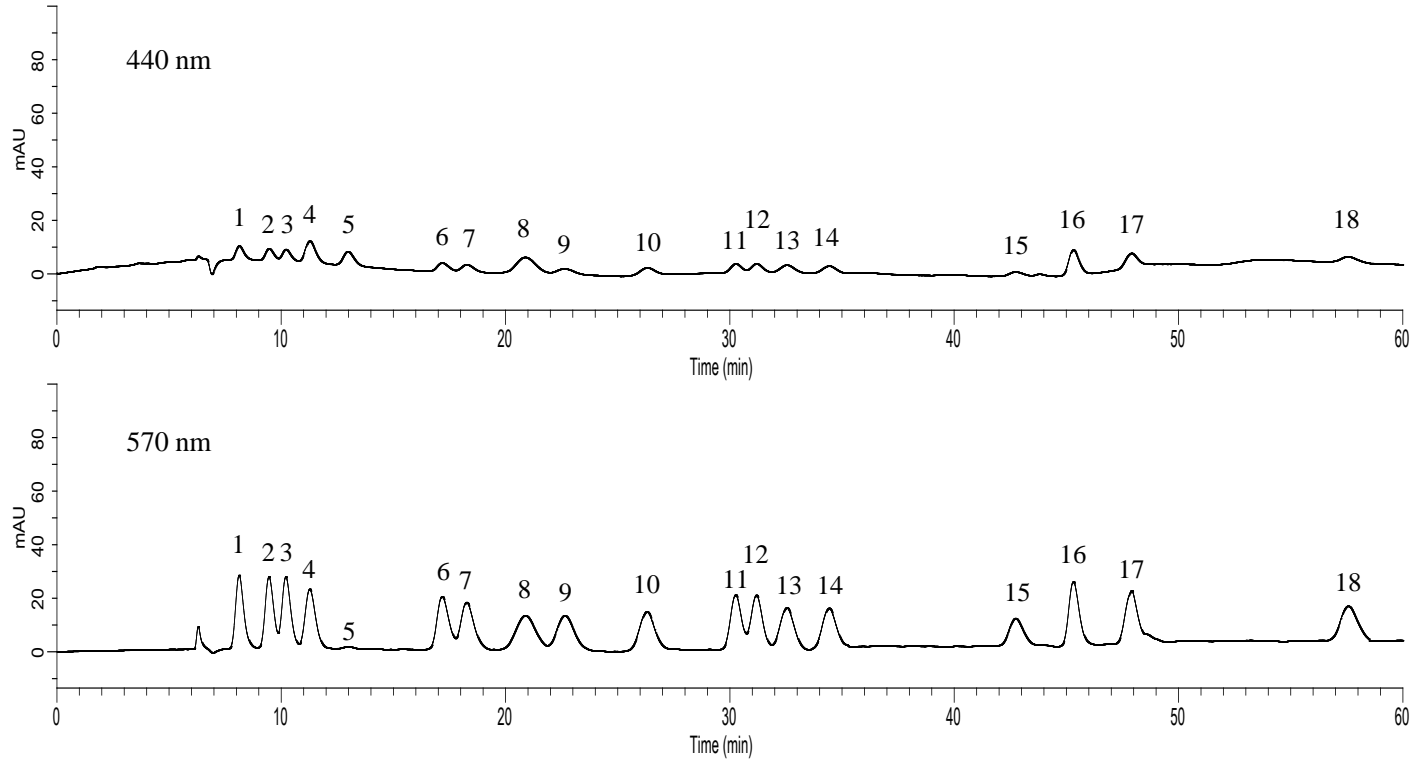


Analysis of Amino acid (post-column ninhydrin)



Conditions

System : GL7700 HPLC system
Trap Column : # 2650 P/N : 890-5202 (120 x 4.0 mm I.D.)
Column : # 2619PH P/N : 890-5203 (150 x 4.0 mm I.D.)
Flow Rate : 0.4 mL/min
Col. Temp. : 60 °C
Detection : VIS 440 nm, 570 nm
Injection Vol. : 10 μL
Sample : Standard

Analyte:

1. Aspartic acid (Asp)
2. Threonine (Thr)
3. Serine (Ser)
4. Glutamic acid (Glu)
5. Proline (Pro)
6. Glycine (Gly)
7. Alanine (Ala)
8. Cysteine (Cys)
9. Valine (Val)
10. Methionine (Met)
11. Isoleucine (Ile)
12. Leucine (Leu)
13. Tyrosine (Tyr)
14. Phenylalanine (Phe)
15. NH₃
16. Lysine (Lys)
17. Histidine (His)
18. Arginine (Arg) (50 μ mol/L each)