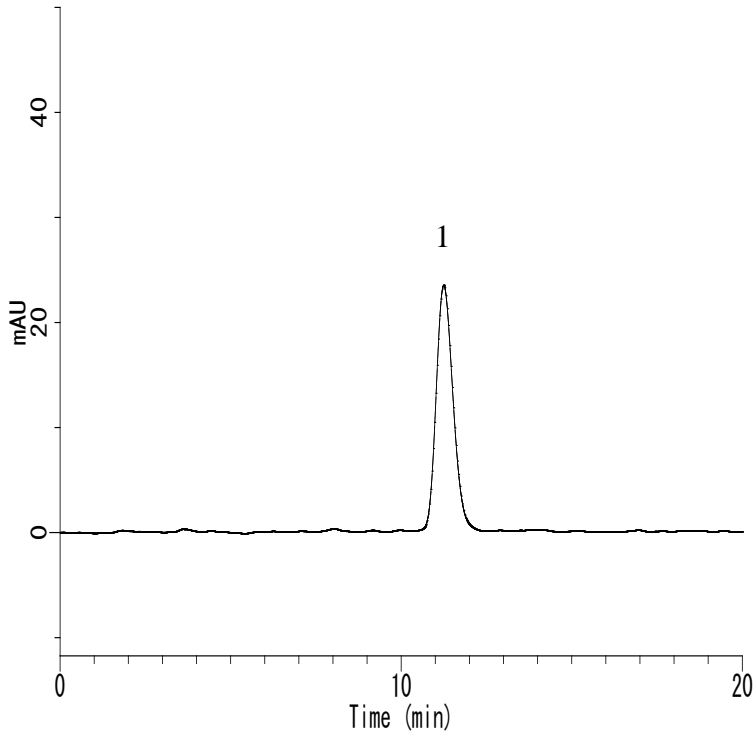


Analysis of Glutamic acid (post-column ninhydrin)



Conditions

System : GL7700 HPLC system
Trap Column : # 2650 P/N : 890-5202 (120 x 4.0 mm I.D.)
Column : # 2619PH P/N : 890-5203 (150 x 4.0 mm I.D.)
Flow Rate : 0.4 mL/min
Col. Temp. : 60 °C
Detection : VIS 440 nm
Injection Vol. : 10 μ L
Sample : Standard

Analyte:

1. Glutamic acid 10 mg/L