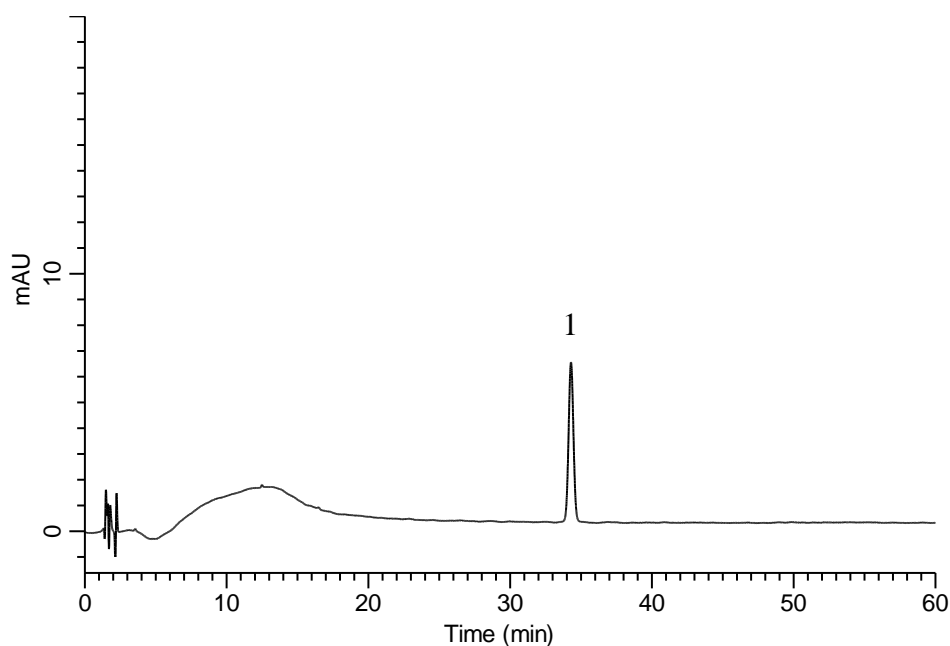


## Analysis of Butenafine hydrochloride (Under the Condition of the Japanese Pharmacopoeia)



### Conditions

**System** : GL-7400 HPLC system  
**Column** : InertSustain C18 HP  
 (3  $\mu$  m, 150 x 3.0 mm I.D.)  
**Column Cat. No.** : 5020-14425  
**Eluent** : A) 0.5 mM CH<sub>3</sub>COONH<sub>4</sub>  
 B) CH<sub>3</sub>CN

Time(min)	A(vol%)	B(vol%)
0~10	60→20	40→80
10~60	20	80

**Flow Rate** : 0.4 mL/min  
**Col. Temp.** : 40 °C  
**Detection** : UV 217 nm (GL-7452 PDA Detector)  
**Injection Vol.** : 10  $\mu$  L  
**Sample** : Standard solution

### Analyte:

1. Butenafine hydrochloride 0.6 mg/L

Theoretical plates : 46,323 ( $\geq$  20,000)  
 Tailing factor : (0.9  $\leq$ ) 1.03 ( $\leq$  1.2)  
 RSD of the  
 peak area (n=6) : 0.63 ( $\leq$  2.0)