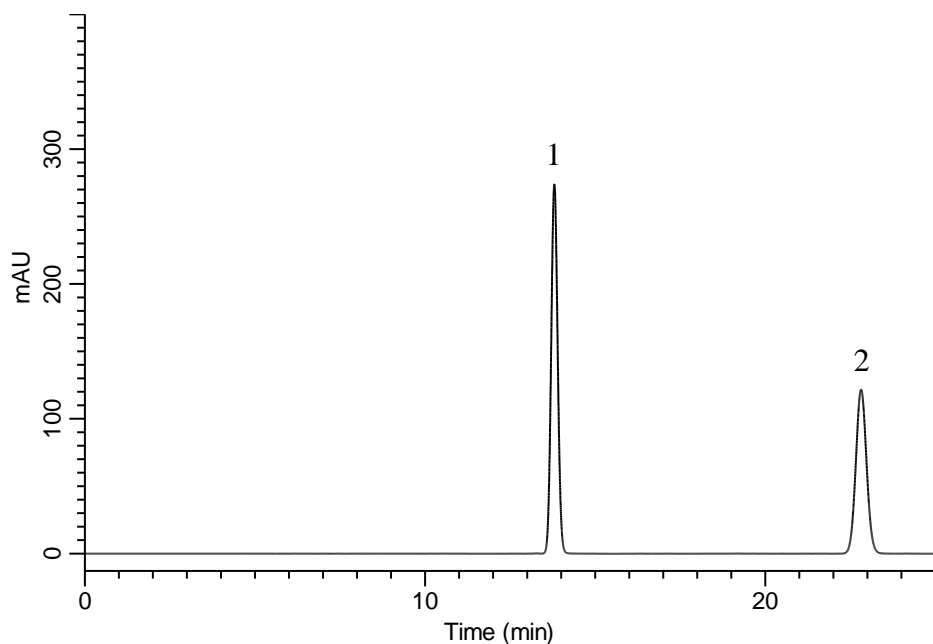


## Analysis of Cilnidipine

(Under the Condition of the Japanese Pharmacopoeia, Cilnidipine Tablets)



### Conditions

**System** : GL7700 HPLC system  
**Column** : Inertsil ODS-4  
 (5  $\mu$  m, 300 x 6.0 mm I.D.)  
**Column Cat. No.** : 5020-89609  
**Eluent** : A) CH<sub>3</sub>CN  
 B) Buffer\*  
 A/B = 60/40, v/v  
**Flow Rate** : 1.2 mL/min  
**Col. Temp.** : 40 °C  
**Detection** : UV 240 nm (UV7750 UV Detector)  
**Injection Vol.** : 10  $\mu$  L  
**Sample** : Standard

\*Dissolve 3.58 g of Na<sub>2</sub>HPO<sub>4</sub> · 12 H<sub>2</sub>O in 1,000 mL of water.  
 Adjust pH 6.0 by phosphoric acid.

### Analyte:

1. 4,4'-Difluorobenzophenone	200 mg/L
2. Cilnidipine	100 mg/L

Resolution (1, 2) : 19.5 ( $\geq$  15)