

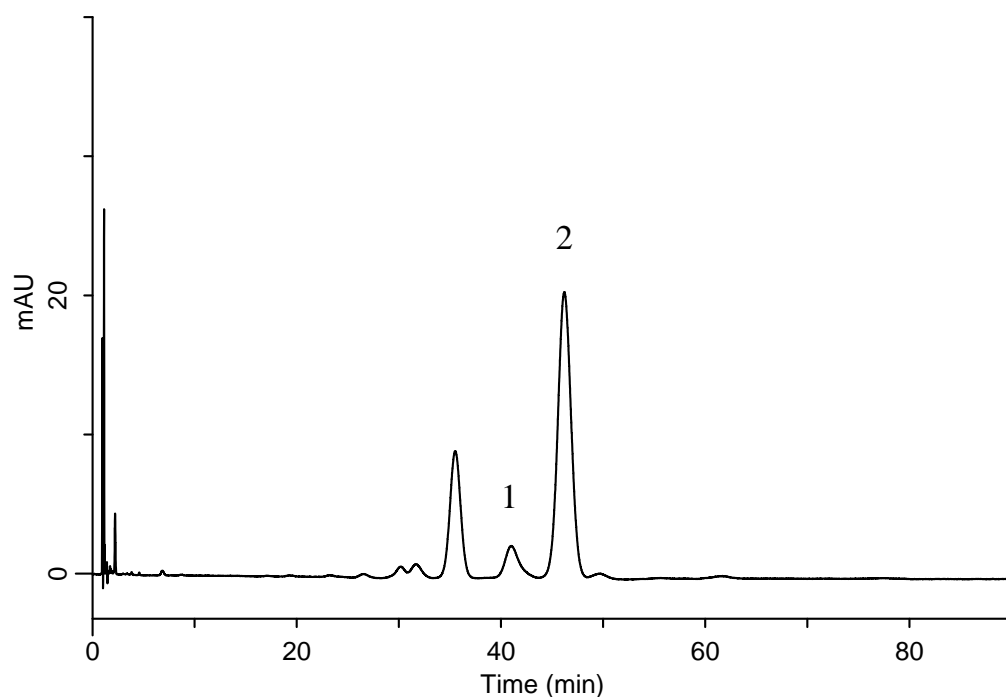
InertSearch™ for LC

Inertsil® Applications

Analysis of Leuprorelin acetate

(Under the Condition of the Japanese Pharmacopoeia)

Data No. LB231-0894



Conditions

System : GL-7400 HPLC system
Column : InertSustainSwift C18 HP
(3 μ m, 100 x 4.6 mm I.D.)
Column Cat. No. : 5020-88224
Eluent : A) CH₃CN
B) 1-Propanol
C) Buffer*
A/B/C = 9/6/85, v/v/v
Flow Rate : 1.25 mL/min
Col. Temp. : 25 °C
Detection : UV 220 nm (GL-7452 PDA Detector)
Injection Vol. : 20 μ L
Sample : Standard

*Dissolve 15.2 g of triethylamine in 800 mL of water.

Adjust to pH 3.0 with phosphoric acid.

Add water to make up to 1000 mL.

Analyte:

1. Impurity
2. Leuprorelin acetate