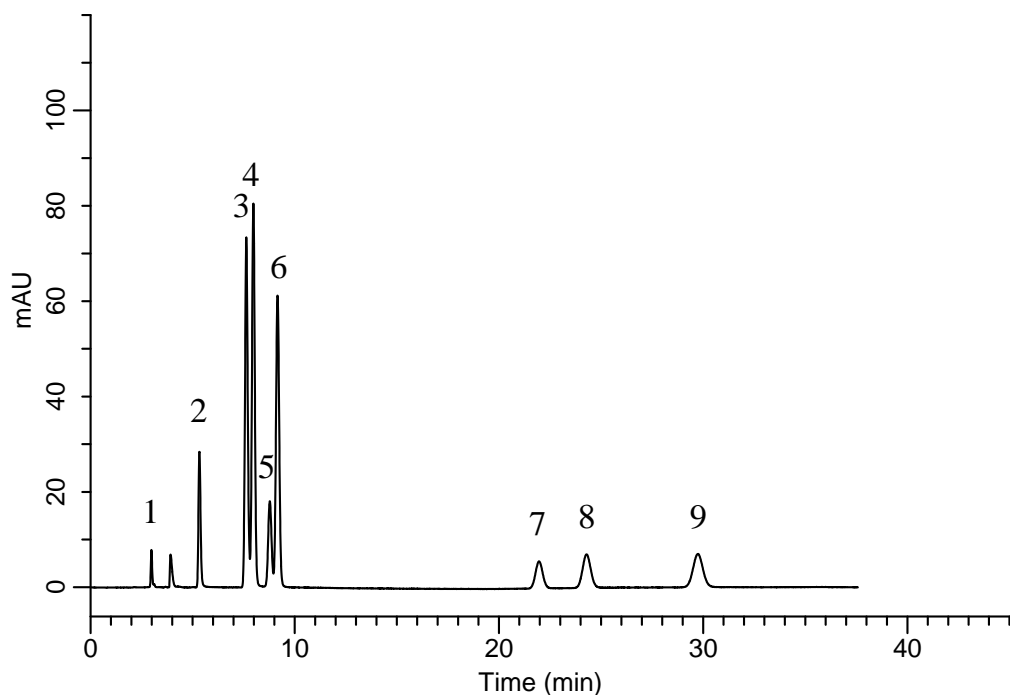


# InertSearch™ for LC

Inertsil® Applications

## Analysis of Preservatives and Sweetener

Data No. LB238-0894



### Conditions

**System** : GL-7400 HPLC system  
**Column** : InertSustain Phenylhexyl  
(5  $\mu$  m, 250 x 4.6 mm I.D.)  
**Column Cat. No.** : 5020-89027  
**Eluent** : A) CH<sub>3</sub>CN  
B) 0.1% H<sub>3</sub>PO<sub>4</sub> in H<sub>2</sub>O  
A/B = 15/85, v/v  
**Flow Rate** : 1.0 mL/min  
**Col. Temp.** : 40 °C  
**Detection** : UV 210 nm (GL-7452 PDA Detector)  
**Injection Vol.** : 10  $\mu$  L  
**Sample** : Standard

### Analyte:

|                                  |         |
|----------------------------------|---------|
| 1. Ascorbic acid                 | 10 mg/L |
| 2. Acesulfame potassium          | 10 mg/L |
| 3. Saccharin sodium              | 10 mg/L |
| 4. Caffeine                      | 10 mg/L |
| 5. Aspartame                     | 10 mg/L |
| 6. <i>p</i> -Hydroxybenzoic acid | 10 mg/L |
| 7. Sorbic acid                   | 10 mg/L |
| 8. Benzoic acid                  | 10 mg/L |
| 9. Dehydroacetic acid            | 10 mg/L |