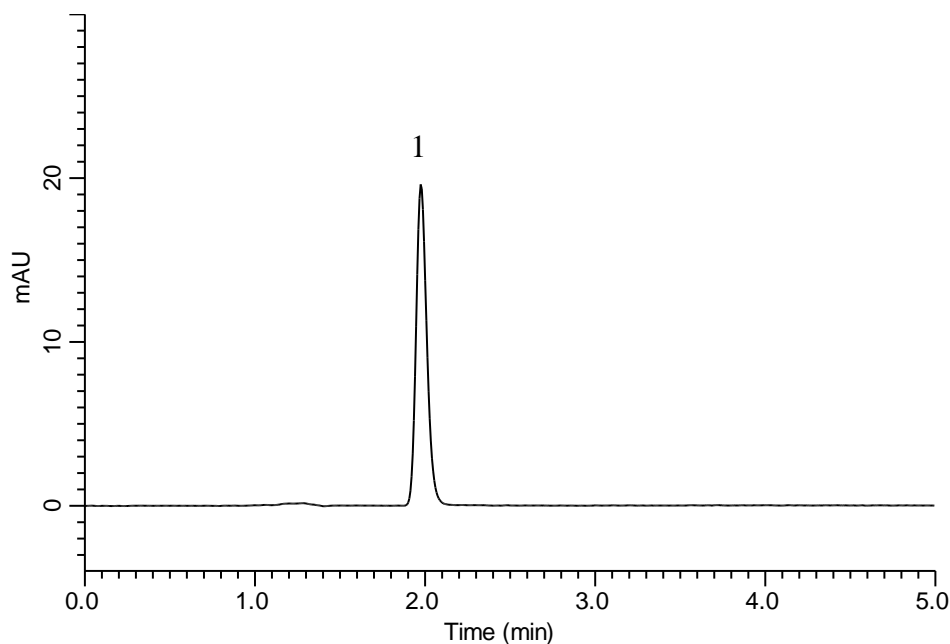


Analysis of L-Carbocisteine

(Under the Condition of the Japanese Pharmacopoeia, L-Carbocisteine Tablets)



Conditions

System : GL-7400 HPLC system
Column : Inertsil ODS-4
 (5 μ m, 150 x 4.6 mm I.D.)
Column Cat. No. : 5020-03945
Eluent : 0.1 % TFA in H₂O
Flow Rate : 1.75 mL/min
Col. Temp. : 20 °C
Detection : UV 240 nm (GL-7452 PDA Detector)
Injection Vol. : 20 μ L
Sample : Standard

Analyte:

1. L-Carbocisteine 140 mg/L

Theoretical plates : 4,843 (\geq 1,500)
 Tailing factor : 1.23 (\leq 2.0)
 RSD of the
 peak area (%) (n=6) : 0.29 (\leq 1.0)