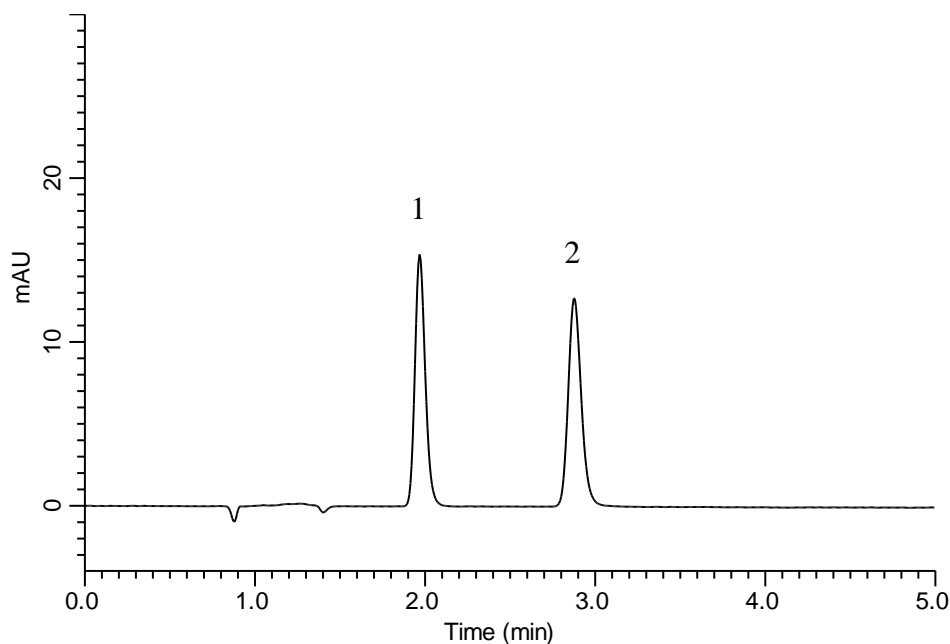


## Analysis of L-Carbocisteine

(Under the Condition of the Japanese Pharmacopoeia, L-Carbocisteine Tablets)



### Conditions

**System** : GL-7400 HPLC system  
**Column** : Inertsil ODS-4  
 (5  $\mu$  m, 150 x 4.6 mm I.D.)  
**Column Cat. No.** : 5020-03945  
**Eluent** : 0.1 % TFA in H<sub>2</sub>O  
**Flow Rate** : 1.75 mL/min  
**Col. Temp.** : 20 °C  
**Detection** : UV 240 nm (GL-7452 PDA Detector)  
**Injection Vol.** : 5  $\mu$  L  
**Sample** : Standard

### Analyte:

1. L-Carbocisteine 400 mg/L  
 2. Nicotinic acid 900 mg/L

Resolution (1, 2) : 7.4 ( $\geq$  4)  
 RSD of the peak  
 area ratio of  
 1 to 2 (%) (n=6) : 0.15 ( $\leq$  1.0)