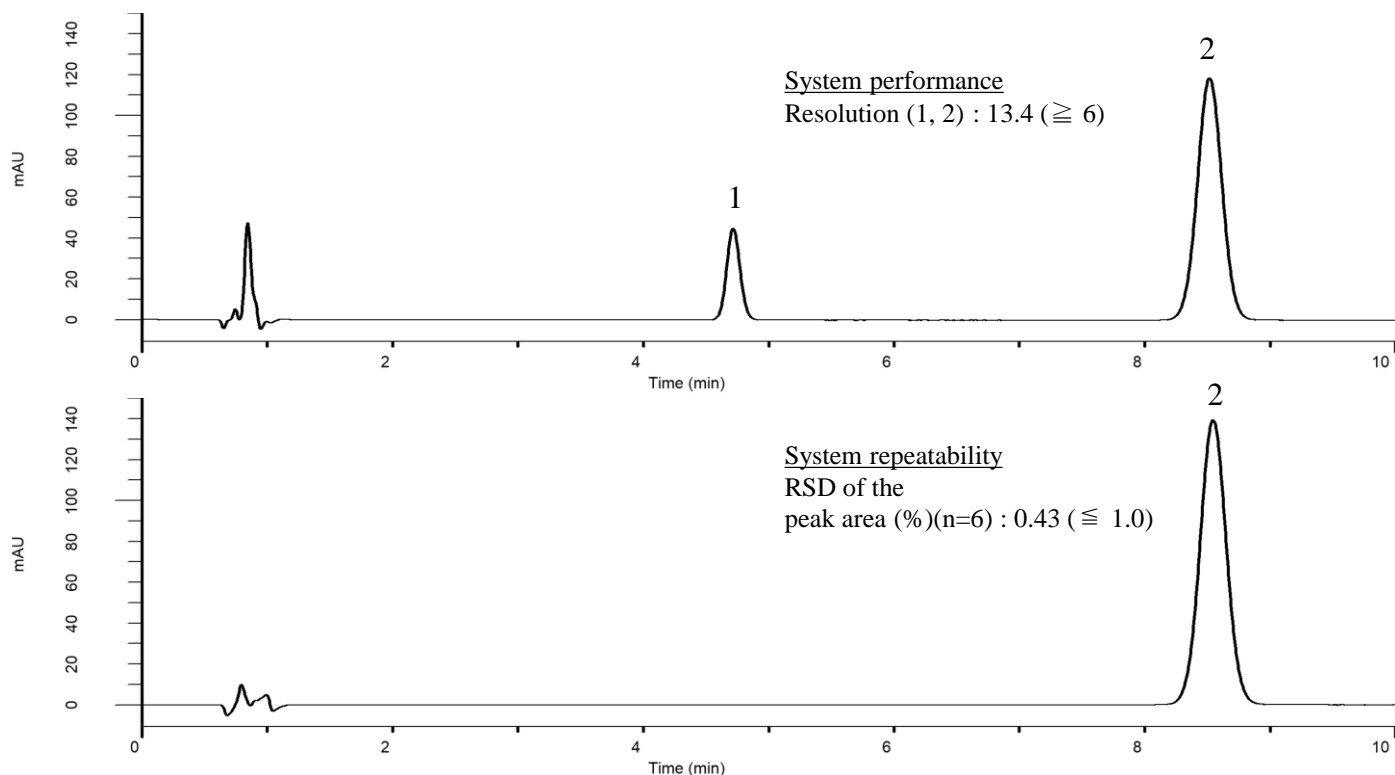


Analysis of Terbinafine hydrochloride

(Under the Condition of the Japanese Pharmacopoeia, Terbinafine hydrochloride Cream)



Conditions

System : GL-7400 HPLC system
Column : InertSustainSwift C18
 (5 μ m, 125 x 4.0 mm I.D.)
Column Cat. No. : 5020-88251
Eluent : A) CH₃CN
 B) THF
 C) Solution*
 A/B = 2/1/2, v/v/v
Flow Rate : 1.46 mL/min
Col. Temp. : 25 °C
Detection : UV 282 nm (GL-7452 PDA Detector)
Injection Vol. : 10 μ L
Sample : Standard

Analyte:

1. <i>p</i> -Terphenyl	17.5 mg/L
2. Terbinafine hydrochloride	200 mg/L

*Dissolve 9 mL of Tetramethylammonium hydroxide (10 % in H₂O) in 2000 mL of water.
 Adjust to pH 8.0 with phosphoric acid (1 in 25).