

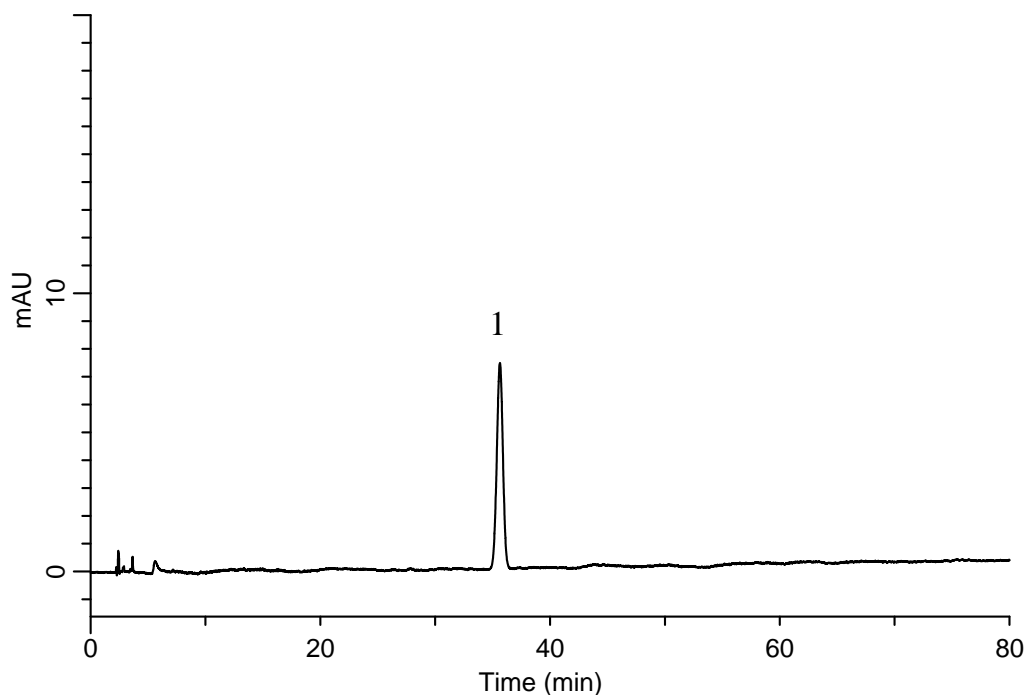
# InertSearch™ for LC

Inertsil® Applications

## Analysis of Azelnidipine

(Under the Condition of the Japanese Pharmacopoeia)

Data No. LB250-0894



### Conditions

**System** : GL-7400 HPLC system  
**Column** : Inertsil ODS-4 (5  $\mu$  m, 250 x 4.6 mm I.D.)  
**Column Cat. No.** : 5020-03946  
**Eluent** : A) CH<sub>3</sub>CN  
B) CH<sub>3</sub>OH  
C) 22 mM KH<sub>2</sub>PO<sub>4</sub> in H<sub>2</sub>O (pH 5.5, H<sub>3</sub>PO<sub>4</sub>)  
A/B/C = 45.5/19.5/35, v/v/v  
**Flow rate** : 1.0 mL/min  
**Col. Temp.** : 40 °C  
**Detection** : UV 220 nm (GL-7452A PDA Detector)  
**Injection Vol.** : 10  $\mu$  L

### Analyte:

1. Azelnidipine 10 mg/L

Theoretical plates : 21,198 ( $\geq$  15,000)  
Tailing factor : (0.8  $\leq$ ) 0.99 ( $\leq$  1.5)  
RSD of the peak area (%) (n=6) : 0.79 ( $\leq$  1.0)