

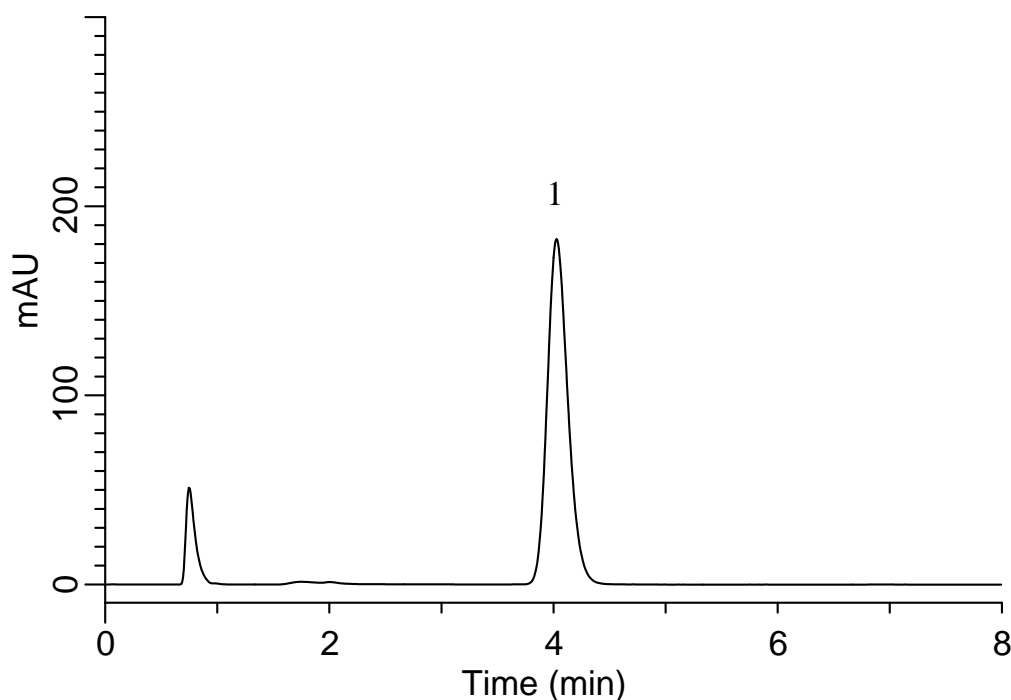
# InertSearch™ for LC

Inertsil® Applications

## Analysis of Quetiapine fumarate

(Under the Condition of the Japanese Pharmacopoeia, Quetiapine fumarate Tablets)

Data No. LB251-0894



### Conditions

**System** : GL-7400 HPLC system  
**Column** : Inertsil C8-4  
(5  $\mu$  m, 80 x 4.0 mm I.D.)  
**Column Cat. No.** : 5020-87022  
**Eluent** : A) CH<sub>3</sub>CN  
B) CH<sub>3</sub>OH  
C) 20 mM (NH<sub>4</sub>)<sub>2</sub>HPO<sub>4</sub>  
A/B = 7/54/39, v/v/v  
**Flow Rate** : 0.95 mL/min  
**Col. Temp.** : 25 °C  
**Detection** : UV 230 nm (GL-7452 PDA Detector)  
**Injection Vol.** : 50  $\mu$  L  
**Sample** : Standard

### Analyte:

1. Quetiapine fumarate 16 mg/L

Theoretical plates : 2,363 ( $\geq$  1,400)  
Tailing factor : 1.19 ( $\leq$  1.5)  
RSD of the peak area (n=6) : 0.13 ( $\leq$  2.0)