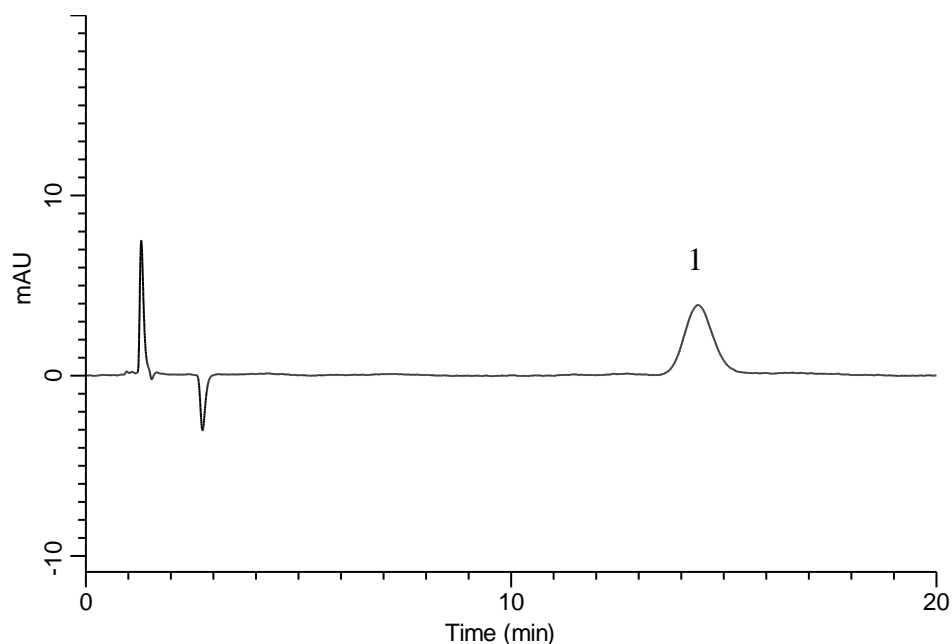


Analysis of Glimepiride



Conditions

System : GL-7400 HPLC system
Column : Inertsil Diol
 (5 μ m, 150 x 3.0 mm I.D.)
Column Cat. No. : 5020-05625
Eluent : A) Heptane
 B) 2-Propanol
 C) CH₃COOH
 A/B = 900/100/1, v/v/v
Flow Rate : 0.7 mL/min
Col. Temp. : 25 °C
Detection : UV 228 nm (GL-7450 UV Detector)
Injection Vol. : 10 μ L

Analyte:

1. Glimepiride 5 mg/L

Theoretical plates : 2,094

Tailing factor : 1.14 (\leq 1.5)