

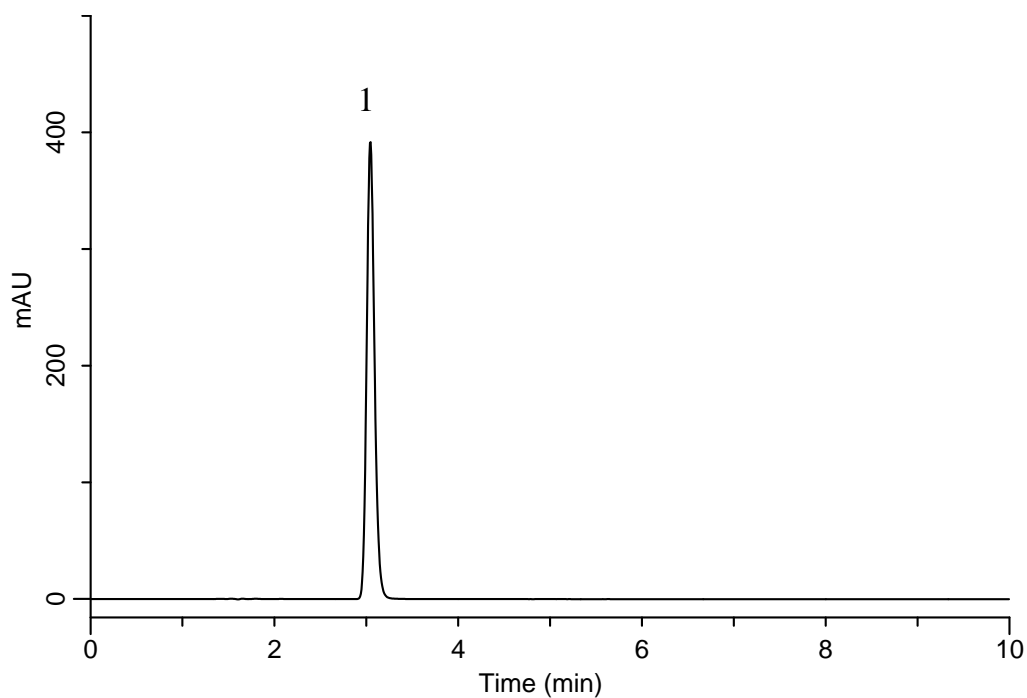
InertSearch™ for LC

Inertsil® Applications

Analysis of Brotizolam

(Under the Condition of the Japanese Pharmacopoeia, Brotizolam Tablets)

Data No. LB254-0894



Conditions

System : GL-7400 HPLC system
Column : Inertsil WP300 C18
(5 μ m, 150 x 4.6 mm I.D.)
Column Cat. No. : 5020-05845
Eluent : A) CH₃CN
B) 1.1 g/L (NH₄)₂CO₃
A/B = 50/60, v/v
Flow Rate : 1.25 mL/min
Col. Temp. : 30 °C
Detection : UV 240 nm (GL-7452 PDA Detector)
Injection Vol. : 40 μ L
Sample : Standard

Analyte:

1. Brotizolam 25 mg/L

Theoretical plates : 6,252 (\geq 3,000)
Tailing factor : 1.14 (\leq 2.0)
RSD of the
peak area (%) (n=6) : 0.22 (\leq 1.0)