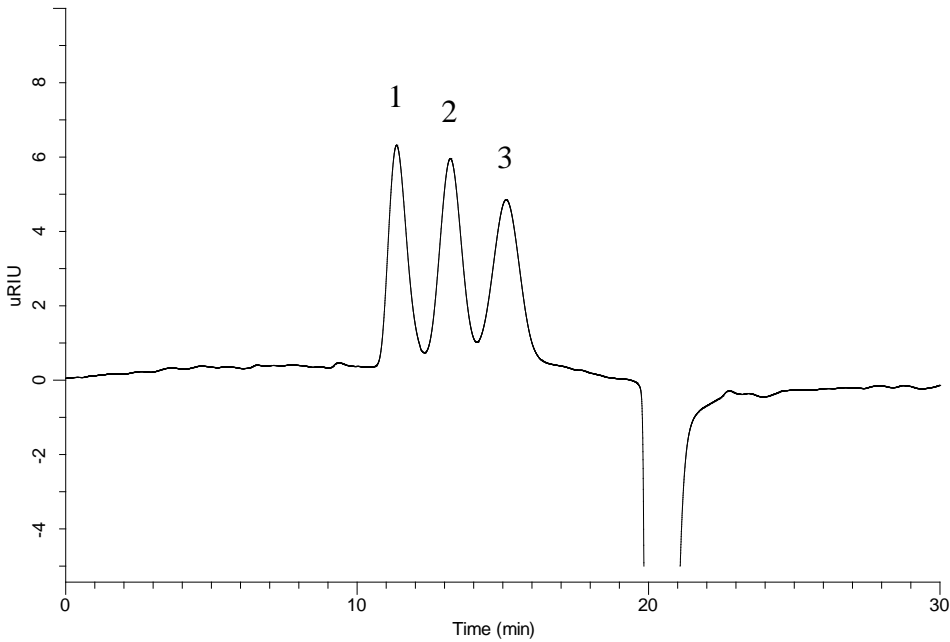


## Analysis of Pullulan



### Conditions

**System** : GL-7400 HPLC system

**Column** : 1. Inertsil WP300 Diol (5  $\mu$  m, 250 x 4.6 mm I.D.)  
+2. Inertsil Diol (5  $\mu$  m, 250 x 4.6 mm I.D.)

**Column Cat. No.** : 1. 5020-05946  
2. 5020-05646

**Eluent** : A) CH<sub>3</sub>OH  
B) H<sub>2</sub>O  
A/B = 20/80, v/v

**Flow Rate** : 0.3 mL/min

**Col. Temp.** : 40 °C

**Detection** : RI

**Injection Vol.** : 20  $\mu$  L

**Sample** : Standard

### Analyte:

Pullulans :

M.W.

1. 107,000	500 $\mu$ g/mL
2. 21,100	500 $\mu$ g/mL
3. 5,900	500 $\mu$ g/mL