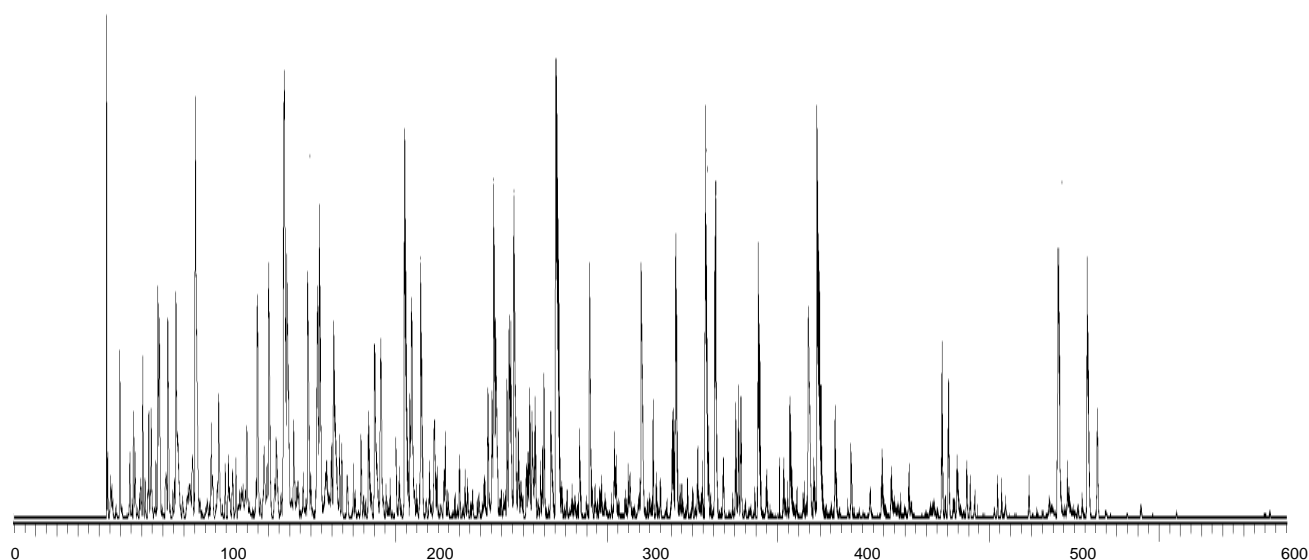


Analysis of Tryptic digest of proteins



Conditions

System : GLS Capillary HPLC system
Column : MonoCap C18 High Resolution 2000
 (2000 × 0.1 mm I.D.)
Column Cat. No. : 5020-10015
Trap column : MonoCap C18 Trap Column
 (50 × 0.075 mm I.D.)
Column Cat. No. : 5020-10028
Eluent : A) 0.1 % HCOOH in CH₃CN
 B) 0.1 % HCOOH in H₂O
 A/B = 10/90 - 600 min - 45/55, v/v
Flow Rate : 0.5 μL/min
Col. Temp. : ambient
Detection : LC/MS/MS (JMS-T100-LC, JEOL, TIC, m/z 500-1500)
Injection Vol. : 5 μL
Sample : Tryptic digest of proteins