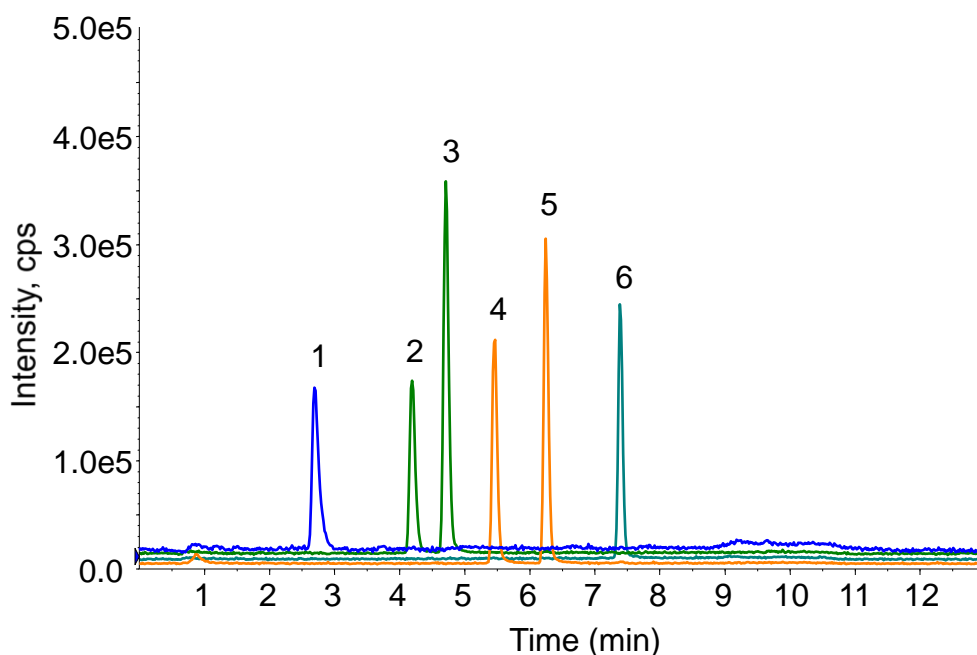


Analysis of Chlorophenol



Conditions

System : LC800 HPLC system
Column : InertSustain C18 HP
 (3 μ m, 100 x 2.1 mm I.D.)
Column Cat. No. : 5020-14414
Eluent : A) CH₃OH
 B) CH₃OH/H₂O = 10/90, v/v

Time (min)	A (vol%)	B (vol%)
0	40	60
8	90	10
8.5	90	10
8.6	40	60
13.6	40	60

Analyte:

1. Phenol
2. 2-Chlorophenol
3. 4-Chlorophenol
4. 2,6-Dichlorophenol
5. 2,4-Dichlorophenol
6. 2,4,6-Trichlorophenol
 (0.83 μ g/L in H₂O each)

Flow Rate : 0.3 mL/min
Col. Temp. : 40 °C
Detection : LC/MS (4000 QTRAP®: APCI, Negative, SIM)
Injection Vol. : 25 μ L
Sample : Standard