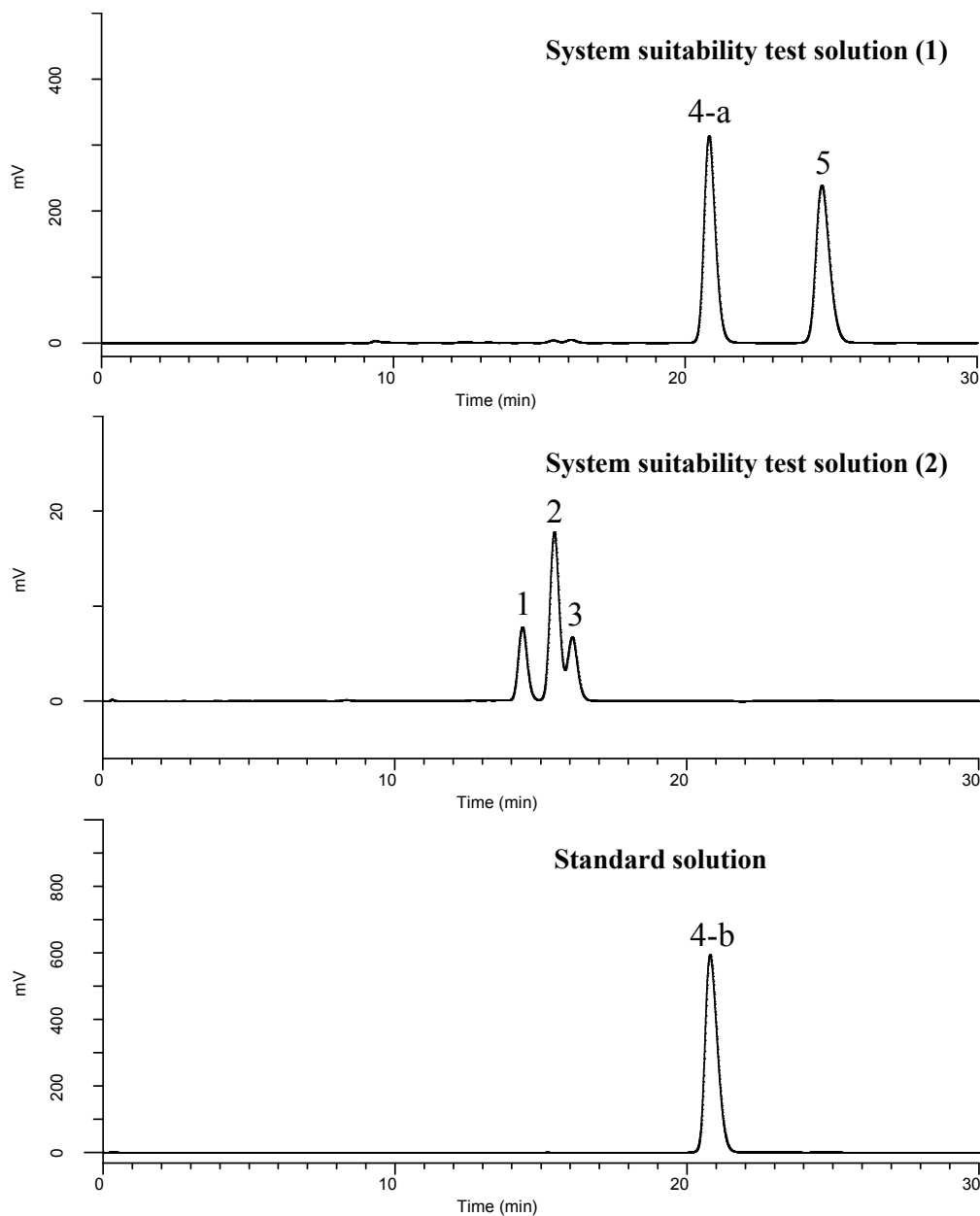


InertSearch™ for LC

Inertsil® Applications

Analysis of D-Mannitol

Data No. LB267-0894



Conditions

System : GL7700 HPLC system
Column : HC-75 (Ca²⁺)
(9 μm, 300 x 7.8 mm I.D.)
Column Cat. No. : 7845-79642
Eluent : H₂O
Flow Rate : 0.5 mL/min
Col. Temp. : 85 °C
Detection : RI (40 °C, RI7754 RI Detector)
Injection Vol. : 20 μL
Sample : Standard

Analyte:

1,3. Isomalt
2. Maltitol
4. D-Mannitol
5. D-Sorbitol

Relative retention time (1 to 4-a) : 0.69 (about 0.6)
Relative retention time (2 to 4-a) : 0.74 (about 0.69)
Relative retention time (3 to 4-a) : 0.77 (about 0.73)
Relative retention time (5 to 4-a) : 1.19 (about 1.2)

Resolution (4-a, 5) : 4.90 (≥ 2.0)
RSD of the peak
area 4-b (%) (n=6) : 0.10 (≤ 1.0)