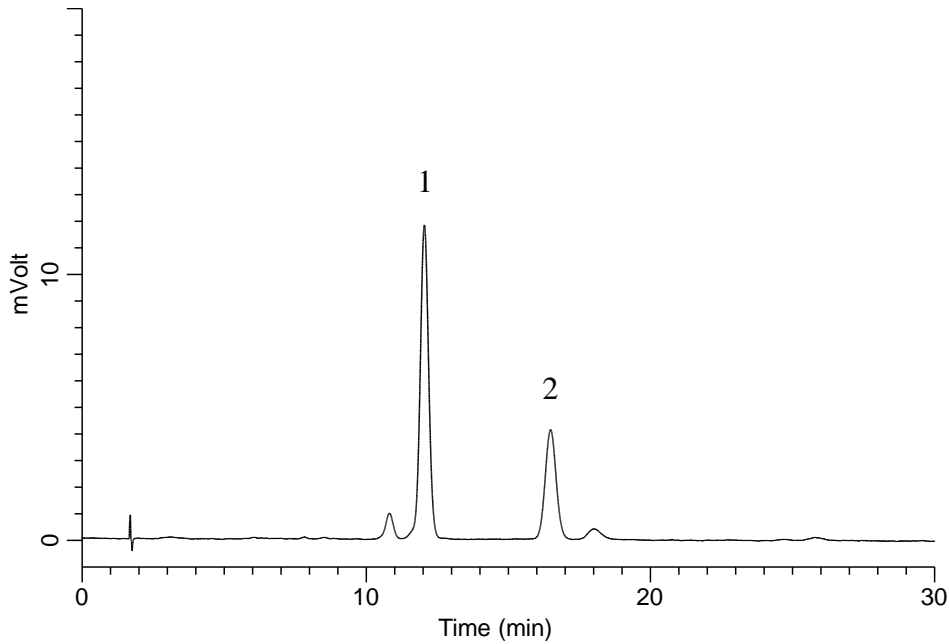


Analysis of Capsaicin



Conditions

System : LC800 HPLC system
Column : InertSustain Phenylhexyl
 (5 μ m, 150 x 4.6 mm I.D.)
Column Cat. No. : 5020-89026
Eluent : A) CH₃OH
 B) H₂O
 A/B = 60/40, v/v
Flow Rate : 1.0 mL/min
Col. Temp. : 40 °C
Detection : UV 280 nm
Injection Vol. : 2 μ L
Sample : Standard

Analyte:

1. Capsaicin 100 mg/L
 2. Impurity