

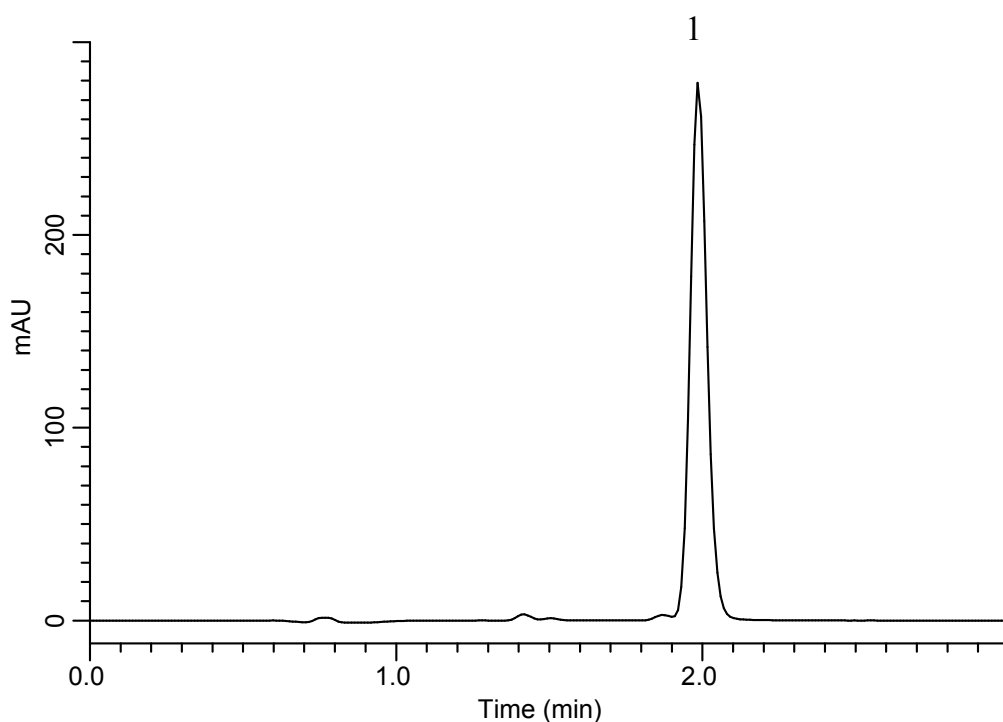
# InertSearch™ for LC

Inertsil® Applications

## Analysis of Montelukast sodium

(Under the Condition of the Japanese Pharmacopoeia, Montelukast sodium Tablets)

Data No. LB281-0894



### Conditions

**System** : GL7700 HPLC system  
**Column** : Inertsil Ph  
(5  $\mu$  m, 100 x 3.0 mm I.D.)  
**Column Cat. No.** : 5020-89601  
**Eluent** : 0.2 % TFA in (CH<sub>3</sub>CN/H<sub>2</sub>O = 1/1, v/v)  
**Flow Rate** : 0.87 mL/min  
**Col. Temp.** : 50 °C  
**Detection** : UV 389 nm (PD7752 PDA Detector)  
**Injection Vol.** : 50  $\mu$  L  
**Sample** : Standard

### Analyte:

1. Montelukast sodium 7 mg/L

Theoretical plates : 6,183 ( $\geq$  2,000)  
Tailing factor : 1.15 ( $\leq$  1.5)  
RSD of the peak  
area %(n=5) : 0.09 ( $\leq$  2.0)