

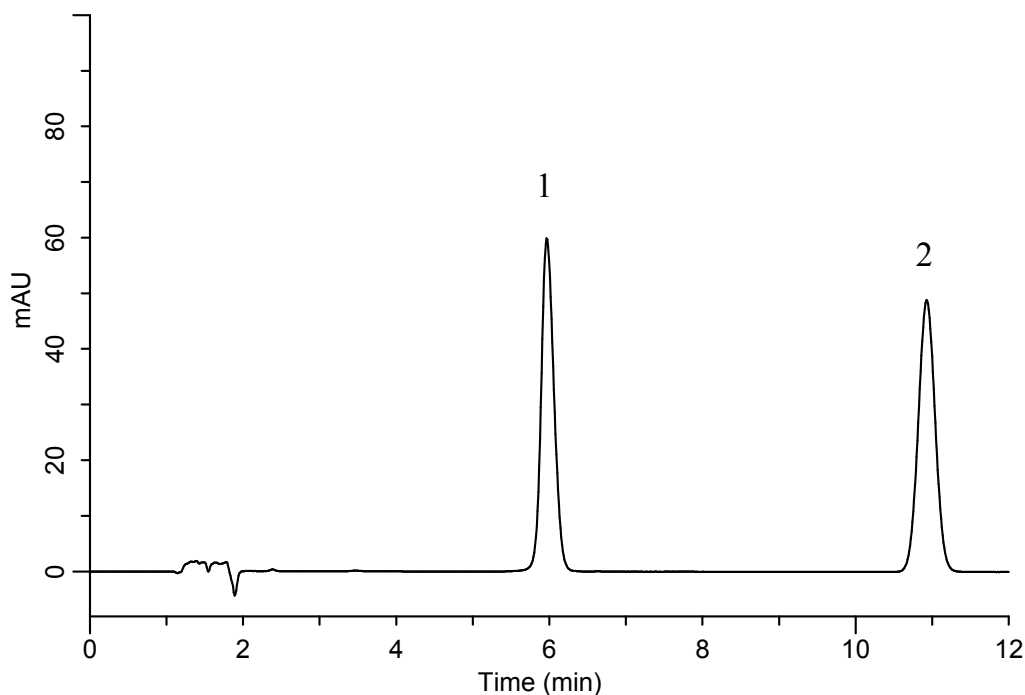
# InertSearch™ for LC

Inertsil® Applications

## Analysis of Silodosin

(Under the Condition of the Japanese Pharmacopoeia)

Data No. LB284-0894



### Conditions

**System** : GL7700 HPLC system  
**Column** : InertSustain C18  
(5  $\mu$  m, 150 x 4.6 mm I.D.)  
**Column Cat. No.** : 5020-07345  
**Eluent** : A) CH<sub>3</sub>CN  
B) Buffer\*  
A/B = 73/27, v/v  
**Flow Rate** : 1.15 mL/min  
**Col. Temp.** : 40 °C  
**Detection** : UV 270 nm (PD7752 PDA Detector)  
**Injection Vol.** : 10  $\mu$  L  
**Sample** : Standard

### Analyte:

1. Silodosin 100 mg/L  
2. *p*-Hydroxybenzoic acid ethyl ester 25 mg/L

Resolution (1, 2) : 14.0 ( $\geq$  10)  
RSD of the peak  
area ratio of  
1 to 2 (n=6) : 0.67 ( $\leq$  1.0)

\*Dissolve 3.9 g of sodium dihydrogenphosphate dihydrate in 1000 mL of water.  
Adjust pH 3.4 by diluted phosphoric acid.