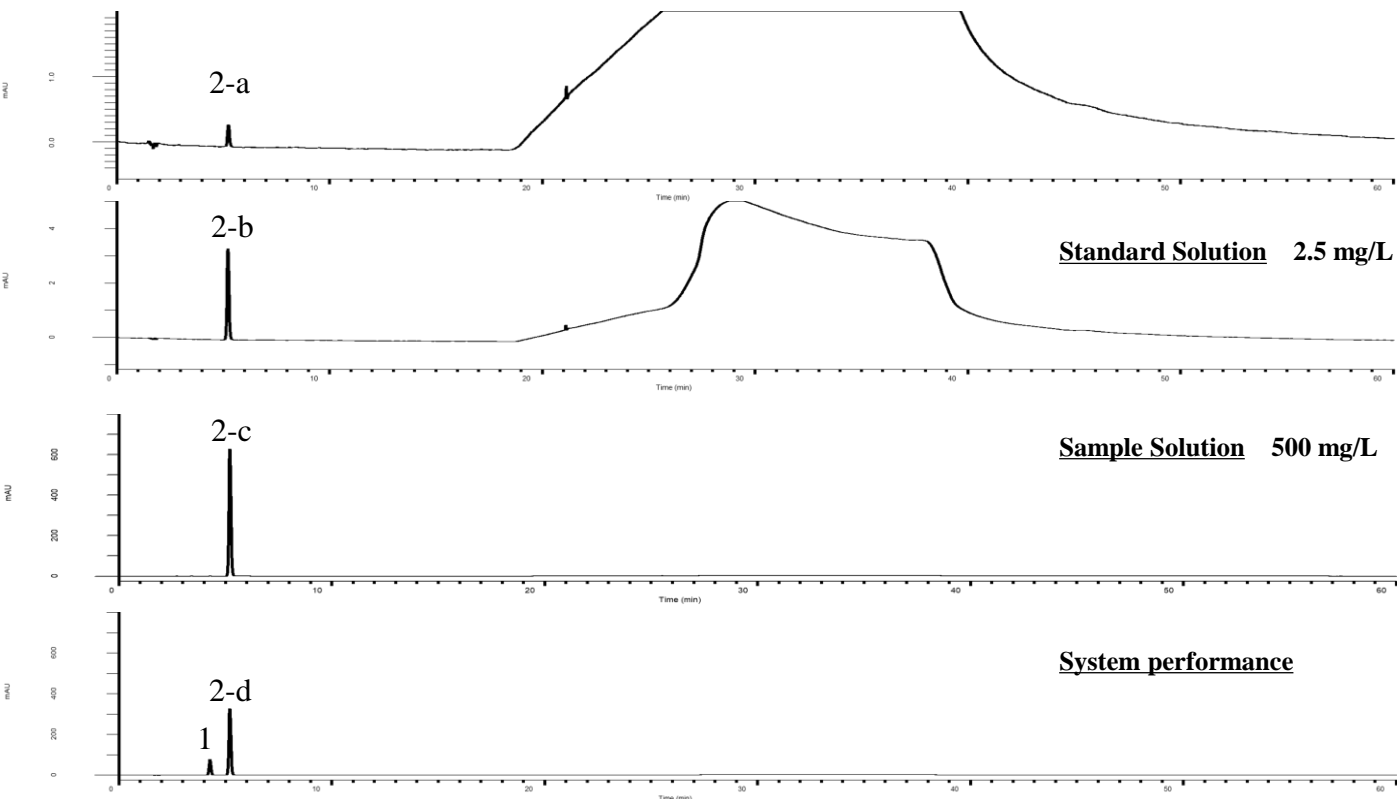


Analysis of Ribavirin

(Under the Condition of the Japanese Pharmacopoeia)

Test for required detectability 250 µg/L



Conditions

System : GL7700 HPLC system
Column : Inertsil ODS-4 HP
 (3 µm, 150 x 4.6 mm I.D.)
Column Cat. No. : 5020-14008
Eluent : A) Solution*
 B) Solution*/CH₃CN = 19/1, v/v

Analyte:

1. Impurity
2. Ribavirin

Resolution (1, 2-d) : 5.28 (≥ 4.0)
 Tailing factor (2-b) : 1.11 (≦ 1.5)
 RSD of the peak
 area (2-b)(%)(n=6) : 0.26 (≦ 2.0)

Time(min)	A(vol%)	B(vol%)
0.0	100	0
15.0	100	0
25.0	0	100
35.0	0	100
35.1	100	0
60.0	100	0

Flow Rate : 1.0 mL/min
Col. Temp. : 25 °C
Detection : UV 220 nm (PD7752 PDA Detector)
Injection Vol. : 5 µL
Sample : Standard

*Dissolve 2.0 g of sodium sulfate anhydrous in 300 mL of water.
 Add 8 mL of phosphoric acid(5%) to this solution.
 Add water to make 2,000 mL.