

InertSearch™ for LC

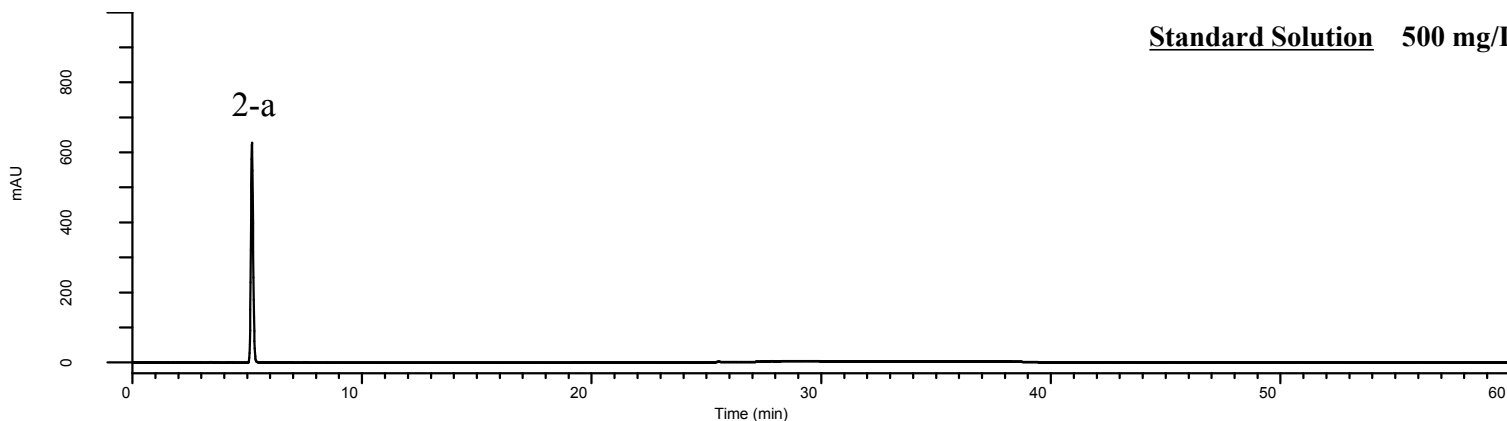
Inertsil® Applications

Analysis of Ribavirin

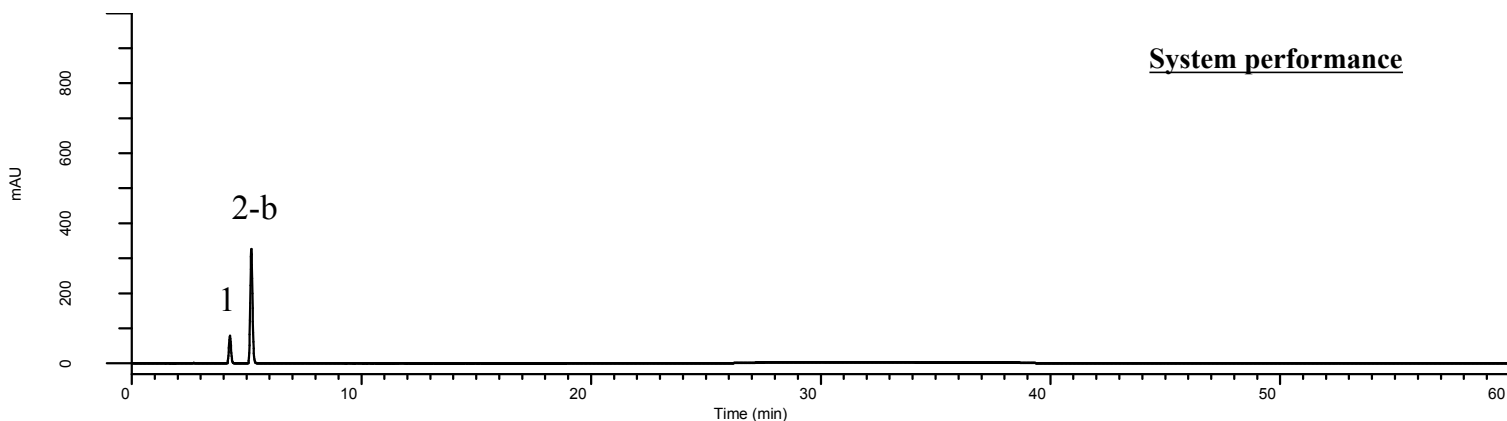
(Under the Condition of the Japanese Pharmacopoeia)

Data No. LB286-0894

Standard Solution 500 mg/L



System performance



Conditions

System : GL7700 HPLC system
Column : Inertsil ODS-4 HP
(3 μ m, 150 x 4.6 mm I.D.)
Column Cat. No. : 5020-14008
Eluent : A) Solution*
B) Solution*/CH₃CN = 19/1 ,v/v

Analyte:

1. Impurity
2. Ribavirin

Resolution (1, 2-b) : 5.28 (\geq 4.0)
Tailing factor (2-a) : 1.13 (\leq 1.5)
RSD of the peak
area (2-a)(%)(n=6) : 0.46 (\leq 1.0)

Time(min)	A(vol%)	B(vol%)
0.0	100	0
15.0	100	0
25.0	0	100
35.0	0	100
35.1	100	0
60.0	100	0

Flow Rate : 1.0 mL/min
Col. Temp. : 25 °C
Detection : UV 220 nm (PD7752 PDA Detector)
Injection Vol. : 5 μ L
Sample : Standard

*Dissolve 2.0 g of sodium sulfate anhydrous in 300 mL of water.

Add 8 mL of phosphoric acid (5%) to this solution

Add water to make 2,000 mL.

GL Sciences