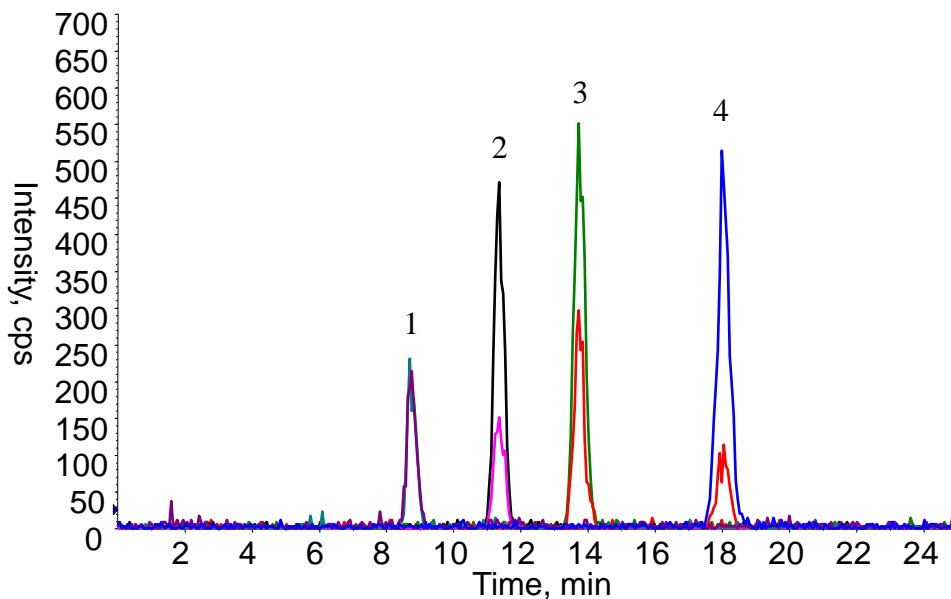


Analysis of Aflatoxin



Conditions

System : LC800 HPLC system
Column : InertSustain C18
 (3 μ m, 150 x 2.1 mm I.D.)
Column Cat. No. : 5020-07415
Eluent : A) CH₃OH
 B) 10 mM CH₃COONH₄
 A/B = 40/60, v/v (Gradient mixer)
Flow Rate : 0.2 mL/min
Col. Temp. : 40 °C
Detection : LC/MS/MS (4000 Q TRAP® : ESI, Positive, MRM)

Analyte:

	Q1/Q3	
	①	②
1. Aflatoxin G2	331.2/245.1	331.1/313.0
2. Aflatoxin G1	329.1/243.1	328.9/200.0
3. Aflatoxin B2	315.1/259.1	314.8/278.0
4. Aflatoxin B1	313.1/241.0	312.9/212.9

CUR CAD IS TEM GS1 GS2
 20 3 5000 600 70 70

Injection Vol. : 10 μ L
Sample : Standard