

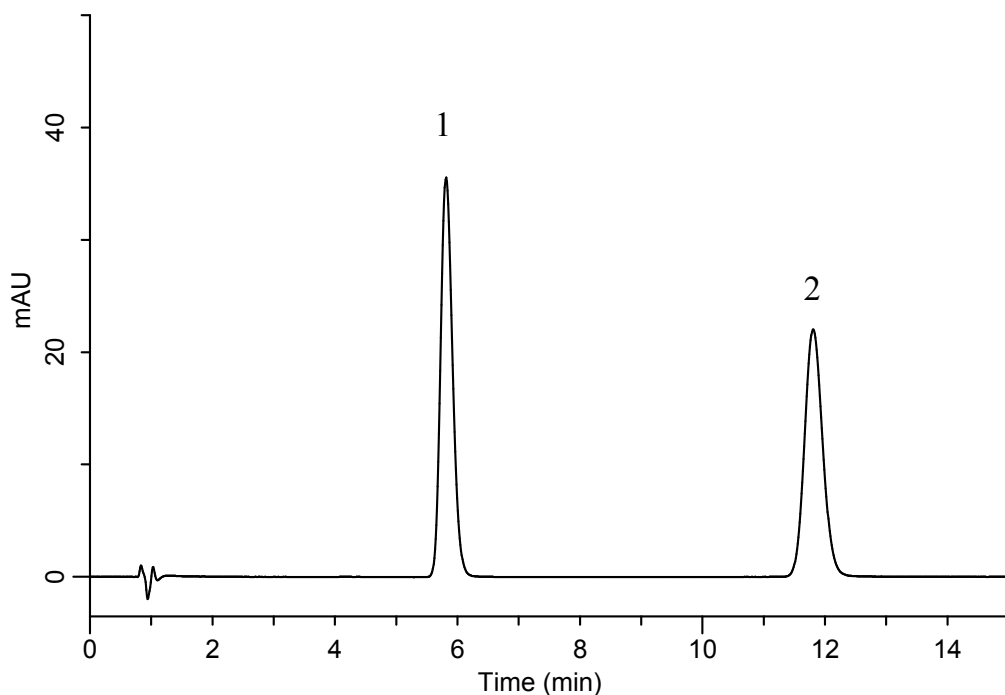
# InertSearch™ for LC

Inertsil® Applications

## Analysis of Cefalexin

(Under the Condition of the Japanese Pharmacopoeia, Cefalexin Combination Granules)

Data No. LB290-0894



### Conditions

**System** : GL7700 HPLC system  
**Column** : InertSustain C18  
(3  $\mu$  m, 75 x 3.0 mm I.D.)  
**Column Cat. No.** : 5020-07423  
**Eluent** : A) CH<sub>3</sub>OH  
B) Buffer\*  
A/B = 20/80, v/v  
**Flow Rate** : 0.45 mL/min  
**Col. Temp.** : 25 °C  
**Detection** : UV 254 nm (PD7752 PDA Detector)  
**Injection Vol.** : 10  $\mu$  L

### Analyte:

1. Cefalexin 20 mg/L  
2. *m*-Hydroxyacetophenone 6.6 mg/L

Resolution (1, 2) : 13.4 ( $\cong$  8)  
RSD of the peak  
area ratio of  
1 to 2 (n=5) : 0.12 ( $\leq$  1.0)

\* Dissolve 2.72 g of monobasic potassium phosphate in 1000 mL of water.  
Adjust pH 3.0 by diluted phosphoric acid.