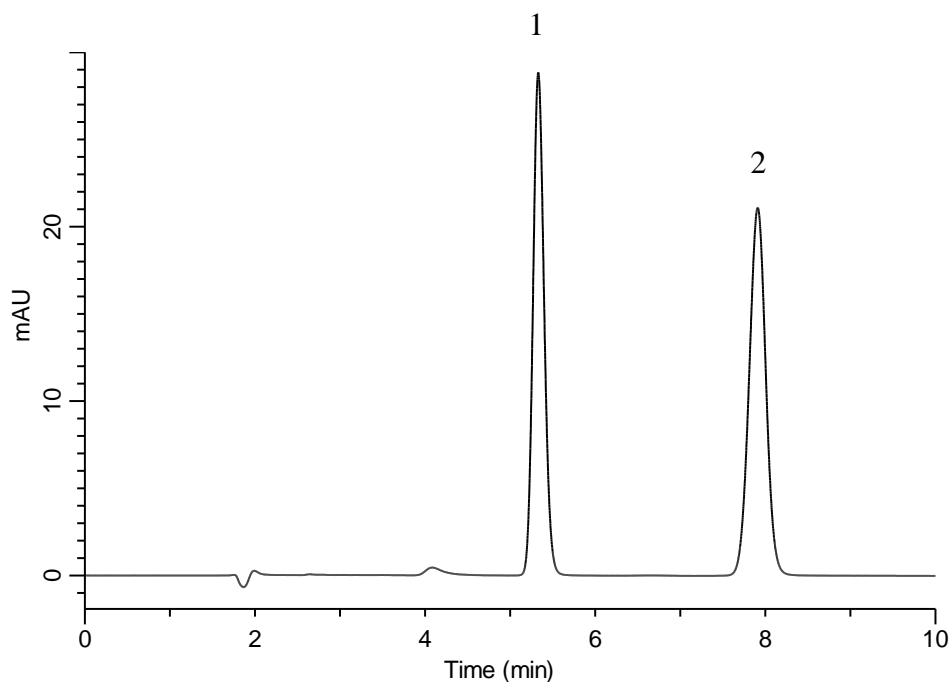


Analysis of Ticlopidine hydrochloride

(Under the Condition of the Japanese Pharmacopoeia, Ticlopidine hydrochloride Tablets)



Conditions

System : GL7700 HPLC system
Column : InertSustain C18
 (5 μ m, 150 x 4.6 mm I.D.)
Column Cat. No. : 5020-07345
Eluent : A) CH₃OH
 B) 50 mM KH₂PO₄ in H₂O (pH3.5, H₃PO₄ in H₂O)
 A/B = 7/3, v/v
Flow Rate : 0.9 mL/min
Col. Temp. : 40 °C
Detection : UV 233 nm (UV7750 UV Detector)
Injection Vol. : 10 μ L
Sample : Standard

Analyte:

1. *p*-Hydroxybenzoic acid butyl ester 20 mg/L
 2. Ticlopidine hydrochloride 20 mg/L

Resolution (1, 2) : 8.6 (≥ 3)
 RSD of the peak
 area ratio of
 2 to 1 (%) (n=6) : 0.32 (≤ 1.0)