

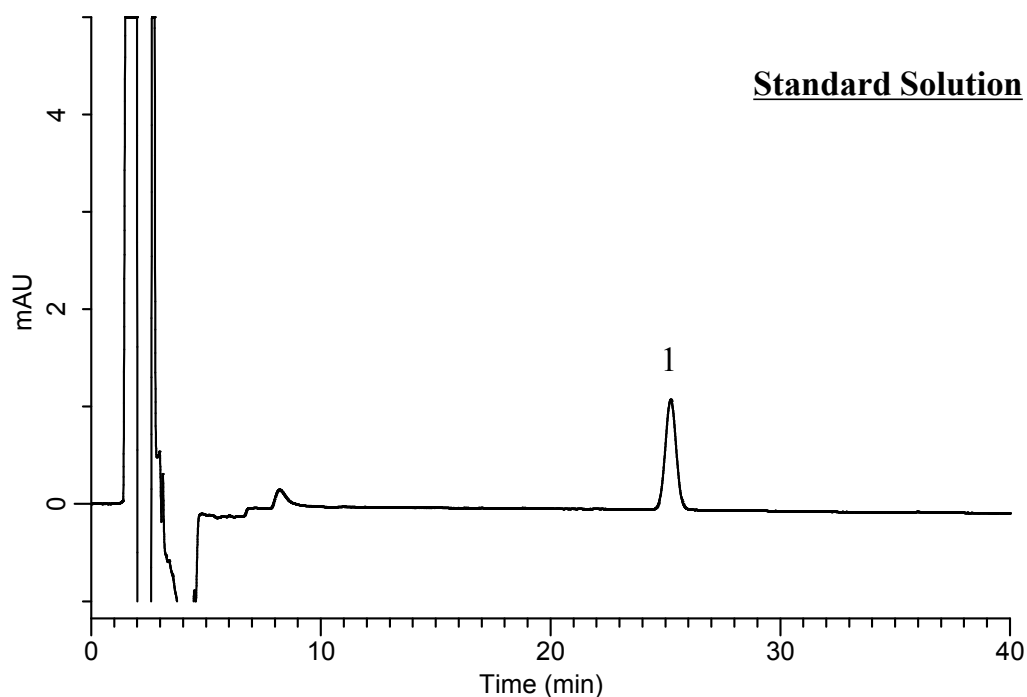
InertSearch™ for LC

Inertsil® Applications

Analysis of Irbesartan

(Under the Condition of the Japanese Pharmacopoeia)

Data No. LB295-0894



Conditions

System : GL7700 HPLC system
Column : InertSustain C18
(5 μ m, 250 x 4.0 mm I.D.)
Column Cat. No. : 5020-07336
Eluent : A) CH₃CN
B) Solution*
A/B = 33/67, v/v
Flow Rate : 1.0 mL/min
Col. Temp. : 25 °C
Detection : UV 220 nm (UV7750 UV Detector)
Injection Vol. : 10 μ L
Sample : Standard

*Dissolve 5.5 mL of phosphoric acid in 950 mL of water.
Adjust pH 3.2 by triethylamine.

Analyte:

1. Irbesartan 1 mg/L

Theoretical plates : 13,377 (\geq 5,000)
Tailing factor : 1.09 (\leq 1.5)
RSD of the
peak area (n=6) : 0.65 (\leq 3.0)