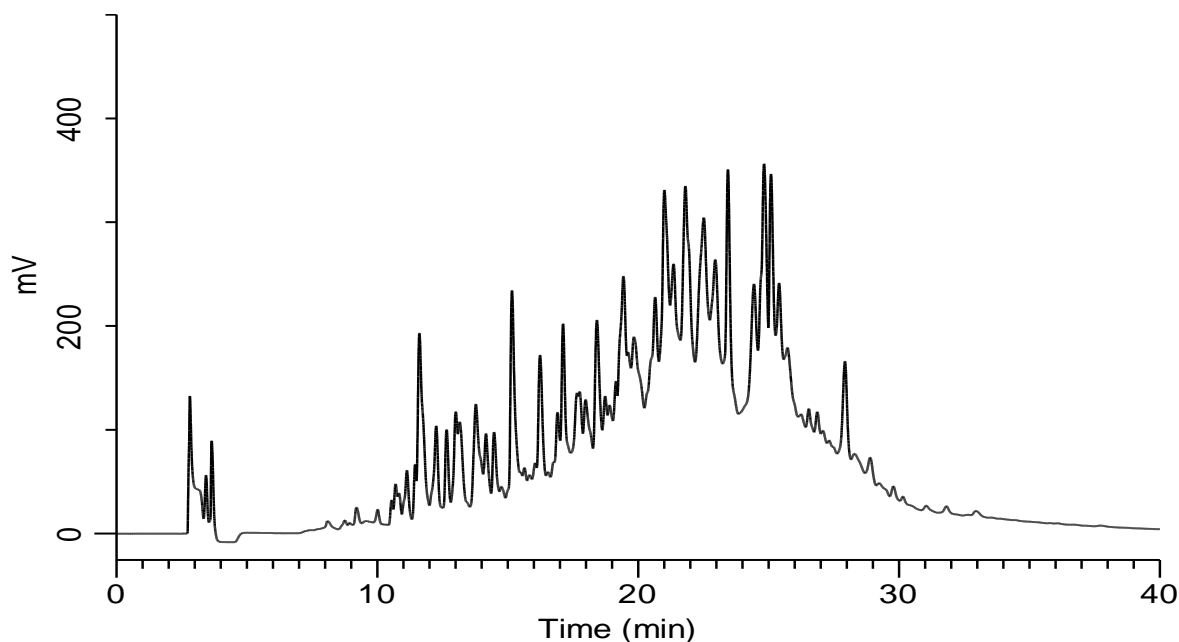


Peptide Separation of Casein Tryptic Digests by Preparative HPLC ODS Column (20 mm I.D.)



Conditions

- System** : PLC 761 Preparative HPLC System
Column : Inertsil ODS-3
 (5 μ m, 250 x 20 mm I.D.)
Column Cat. No. : 5020-06822
Eluent : A) 0.1 % TFA in CH₃CN
 B) 0.1 % TFA in H₂O
 A/B = 0/100 - 40 min - 75/25, v/v
Flow Rate : 20 mL/min
Pressure : 7.6 MPa (Initial), 8.2 MPa (Max.), 5.2 MPa (Min.)
System Pressure : 0.6 MPa
Col. Temp. : Ambient (About 25 °C)
Detection : UV 210 nm (UV702, Cell length 2.4 mm, 1 V = 4 AU)
Injection Vol. : 10 mL
Sample : Tryptic Digests of Casein
 [50 mM NH₄HCO₃ (pH 7.0, HCOOH) 50 mL
 Casein from bovine milk 300 mg
 Trypsin from bovine pancreas 5 mg
 37 °C, 72 hours]