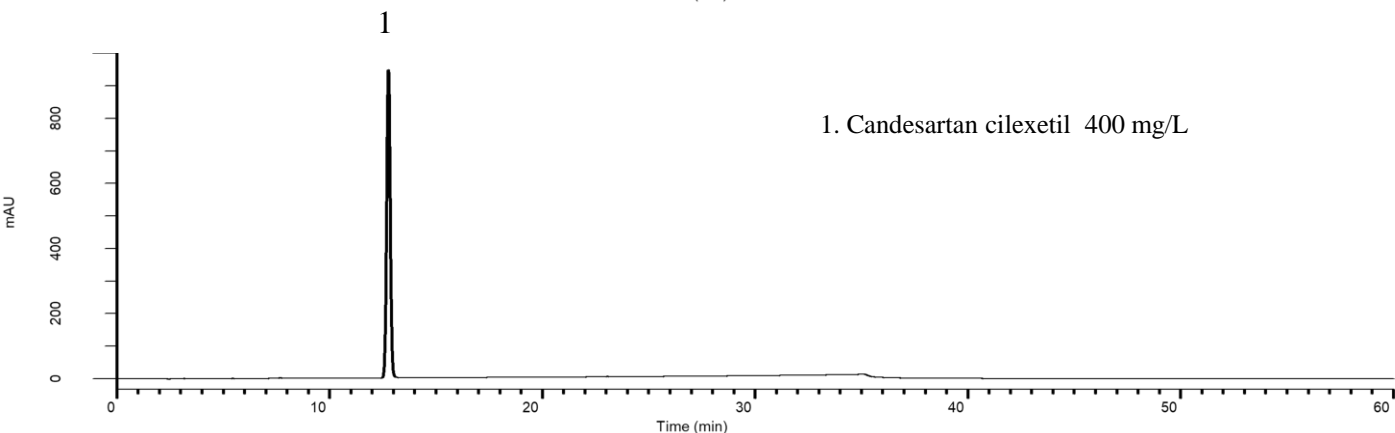
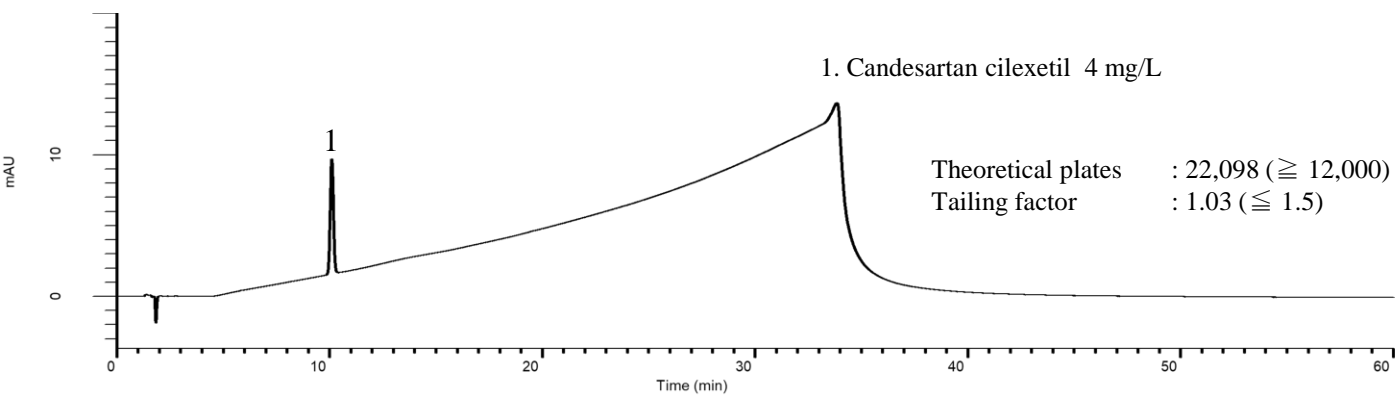


## Analysis of Candesartan cilexetil

(Under the Condition of the Japanese Pharmacopoeia)



### Conditions

**System** : GL7700 HPLC system  
**Column** : Inertsil WP300 C18  
 (4  $\mu$  m, 150 x 4.0 mm I.D.)  
**Column Cat. No.** : 5020-89607  
**Eluent** : A) CH<sub>3</sub>CN/H<sub>2</sub>O/CH<sub>3</sub>COOH = 57/43/1, v/v/v  
 B) CH<sub>3</sub>CN/H<sub>2</sub>O/CH<sub>3</sub>COOH = 90/10/1, v/v/v

Time (min)	A (vol%)	B (vol%)
0.0	100	0
30.0	0	100
30.1	100	0
60.0	100	0

### Analyte:

1. Candesartan cilexetil

**Flow Rate** : 0.8 mL/min  
**Col. Temp.** : 25 °C  
**Detection** : UV 254 nm (UV7750 UV Detector)  
**Injection Vol.** : 10  $\mu$  L  
**Sample** : Standard