

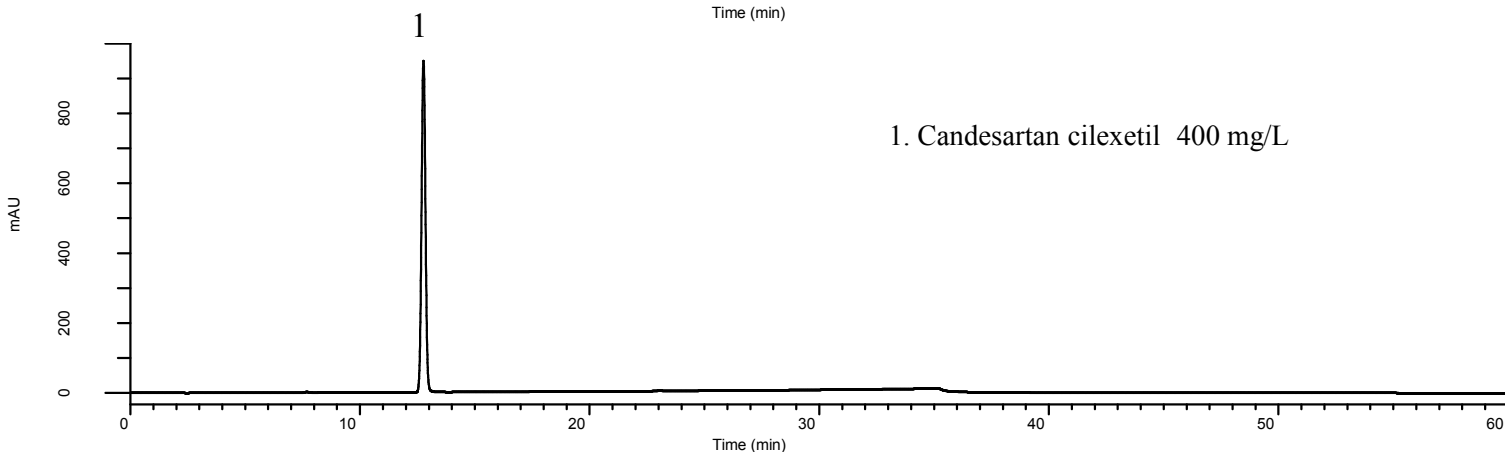
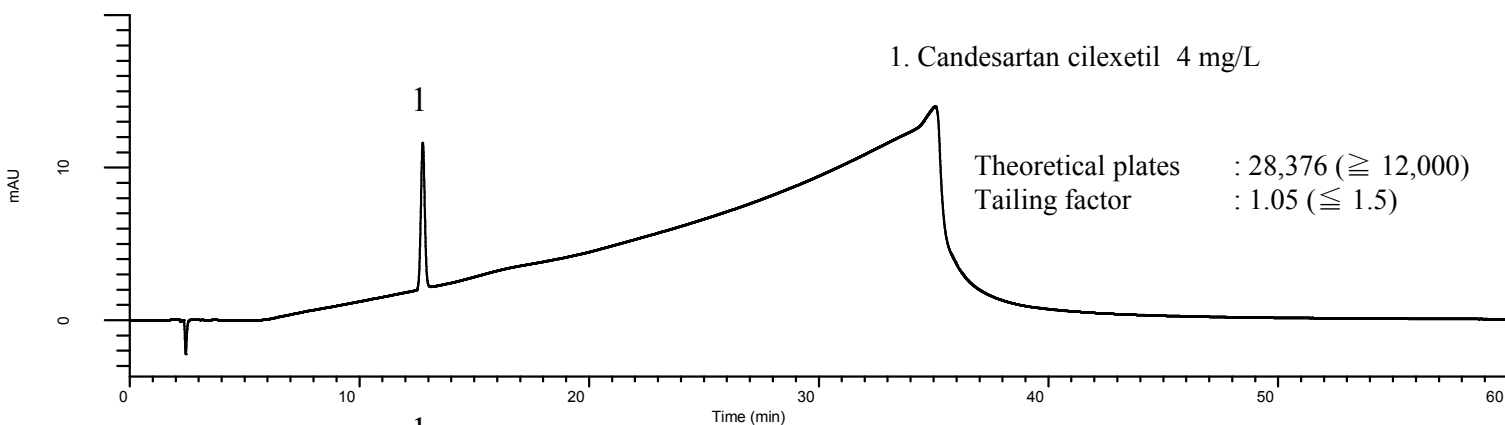
InertSearch™ for LC

Inertsil® Applications

Analysis of Candesartan cilexetil

(Under the Condition of the Japanese Pharmacopoeia,
Candesartan cilexetil and Hydrochlorothiazide Tablets)

Data No. LB300-0894



Conditions

System : GL7700 HPLC system
Column : Inertsil WP300 C18
(4 μ m, 150 x 4.0 mm I.D.)
Column Cat. No. : 5020-89607
Eluent : A) CH₃CN/H₂O/CH₃COOH = 57/43/1, v/v/v
B) CH₃CN/H₂O/CH₃COOH = 90/10/1, v/v/v

Analyte:

1. Candesartan cilexetil

Time (min)	A (vol%)	B (vol%)
0.0	100	0
30.0	0	100
30.1	100	0
60.0	100	0

Flow Rate : 0.6 mL/min
Col. Temp. : 25 °C
Detection : UV 254 nm (UV7750 UV Detector)
Injection Vol. : 10 μ L
Sample : Standard