

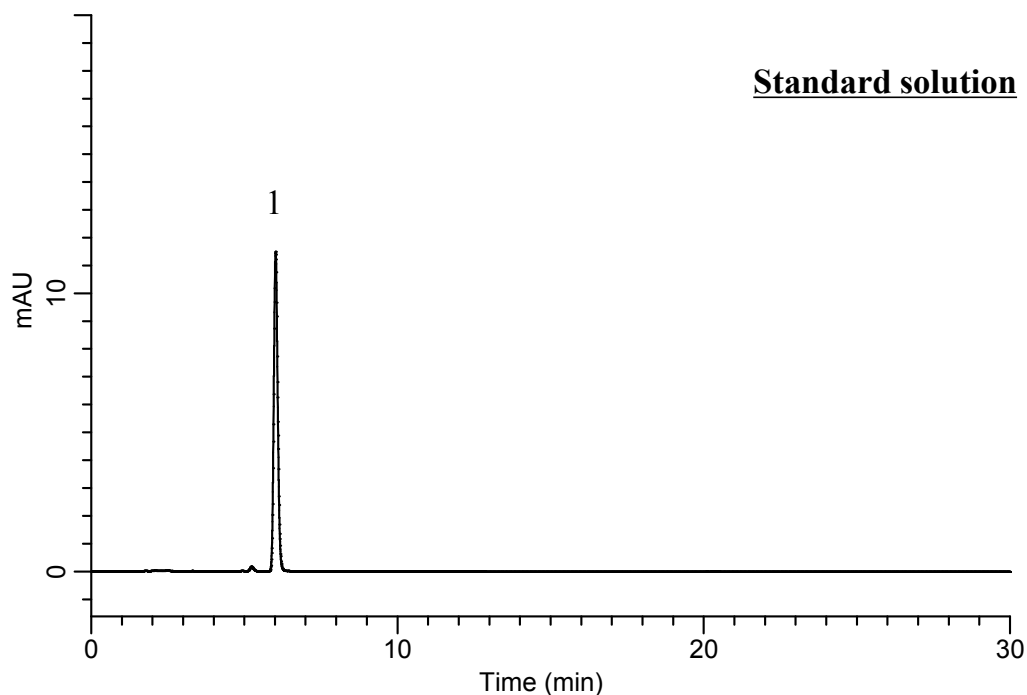
InertSearch™ for LC

Inertsil® Applications

Analysis of Hydrochlorothiazide

(Under the Condition of the Japanese Pharmacopoeia,
Candesartan cilexetil and Hydrochlorothiazide Tablets)

Data No. LB301-0894



Standard solution

Conditions

System : GL7700 HPLC system
Column : Inertsil ODS-4
(4 μ m, 150 x 4.6 mm I.D.)
Column Cat. No. : 5020-89608
Eluent : A) CH₃CN
B) Buffer*
A/B = 1/3, v/v
Flow Rate : 0.71 mL/min
Col. Temp. : 25 °C
Detection : UV 254 nm (UV7750 UV Detector)
Injection Vol. : 10 μ L
Sample : Standard

Analyte:

1. Hydrochlorothiazide 6.25 mg/L

Theoretical plates : 11,095 (\geq 5,000)
Tailing factor : 1.14 (\leq 1.5)

*Dissolve 7.80 g of sodium dihydrogenphosphate dihydrate in 900 mL of water.
Adjust pH 5.5 by sodium hydroxide.
Add water to make 1,000 mL.